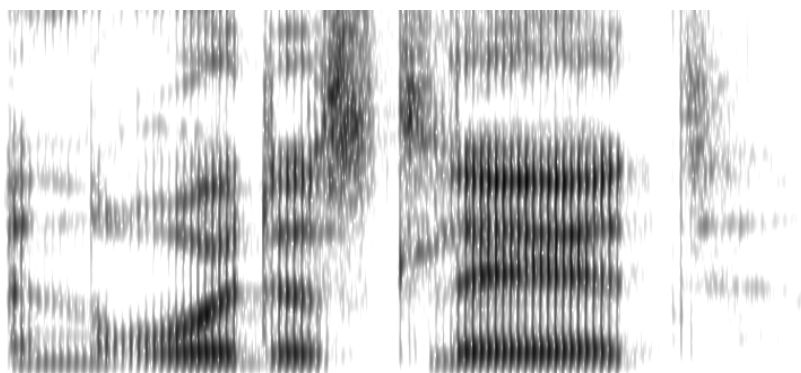


# SAMEER UD DOWLA KHAN

Professor and Chair of Linguistics  
Reed College  
3203 SE Woodstock Bl  
Portland, OR 97202  
+1-503-517-4018

they/he | [skhan@reed.edu](mailto:skhan@reed.edu)  
[www.reed.edu/linguistics/khan/](http://www.reed.edu/linguistics/khan/)



---

## ACADEMIC INTERESTS

intonation/prosody, voice quality/phonation, Bengali & other South Asian languages

---

## EDUCATION

PhD in Linguistics	UCLA	2006-08
Dissertation: Intonational phonology and focus prosody of Bengali		
Committee: Sun-Ah Jun (chair), Bruce P. Hayes, Patricia A. Keating, Jody Kreiman, Kie Ross Zuraw		
MA in Linguistics	UCLA	2004-06
Thesis: Similarity avoidance in Bengali fixed-segment reduplication		
Committee: Kie Ross Zuraw (chair), Bruce P. Hayes, Colin Wilson		
BA in Linguistics, Summa cum Laude	UCLA	2000-03

---

## JOURNAL AND BOOK PUBLICATIONS

Esposito, Christina M. & **SD Khan**. 2025. Teaching & Learning Guide for: The cross-linguistic patterns of phonation types. *Language and Linguistics Compass* 14:e12392.

Keating, Patricia, Jianjing Kuang, Marc Garellek, Christina M. Esposito, & **SD Khan**. 2023. A cross-language acoustic space for phonation distinctions. *Language* 99(2), 351-89.

Becker, Kara, **SD Khan**, & Lal Zimman. 2022. Beyond binary gender: creaky voice, gender, and the variationist enterprise. *Language Variation and Change* 34, 215-38.

Esposito, Christina M. & **SD Khan**. 2020. The cross-linguistic patterns of phonation types. *Language and Linguistics Compass* 14 (12).

Esposito, Christina M., **SD Khan**, Kelly Harper Berkson, & Max Nelson. 2019. Distinguishing breathy consonants and vowels in Gujarati. *Journal of South Asian Languages and Linguistics* 6 (2), 215-43.

**Khan, SD**. 2016. Review of Frota, Sónia & Prieto, Pilar (eds.) *Intonation in Romance*. *Journal of the International Phonetic Association* 46 (2), 253-57.

**Khan, SD**. 2014. The intonational phonology of Bangladeshi Standard Bengali, chapter 4 of Sun-Ah Jun (ed.) *Prosodic Typology II: the Phonology of Intonation and Phrasing*. Oxford University Press.

**Khan, SD** & Constanze Weise. 2013. Upper Saxon (Chemnitz dialect). *Journal of the International Phonetic Association* 43 (2), 231-41.

- Khan, SD.** 2012. The phonetics of contrastive phonation in Gujarati. *Jnl of Phonetics* 40 (6), 780-95.
- Esposito, Christina M. & **SD Khan.** 2012. Contrastive breathiness across consonants and vowels: a comparative study of Gujarati and White Hmong. *Jnl of the Int'l Phonetic Association* 42 (2), 123-43.
- Kreiman, Jody, Bruce R. Gerratt, & **SD Khan.** 2010. Effects of native language on perception of voice quality. *Journal of Phonetics* 38 (4), 588-93.
- Khan, SD.** 2010. Bengali (Bangladeshi Standard). *Jnl of the Int'l Phonetic Association* 40 (2), 221-5.
- Esposito, Christina M., **SD Khan,** & Alex Hurst. 2007. Breathy nasals and /Nh/ clusters in Bengali, Hindi, and Marathi. *Indian Linguistics* 68 (3-4), 275-99. Pune: Linguistic Society of India.

---

## CONFERENCE PROCEEDINGS AND WORKING PAPERS

- Esposito, Christina M., Kevin Schäfer, & **SD Khan.** 2023. Phonation and aging in White Hmong. *Proceedings of the International Congress of Phonetic Sciences 20*, 2050-4.
- Khan, SD.** 2021. Palatalization and velarization in Malayalam nasals. *Proceedings of Formal Approaches to South Asian Languages* 9.
- Esposito, Christina M., **SD Khan,** Kelly Harper Berkson, & Max Nelson. 2019. Distinguishing breathy consonants and vowels in Gujarati. *Proceedings of the Int'l Congress of Phonetic Sciences* 19.
- Khan, SD.** 2016. The intonation of South Asian languages: towards a comparative analysis. *Proceedings of Formal Approaches to South Asian Languages* 6, 23-36.
- Nelson, Max, Kelly Harper Berkson, **SD Khan,** & Christina M. Esposito. 2016. Perception of breathy phonation in Gujarati. *Proceedings of Formal Approaches to South Asian Languages* 6, 14-22.
- Yu, Kristine M., **SD Khan,** & Megha Sundara. 2014. Intonational phonology in Bengali and English infant-directed speech. *Proceedings of Speech Prosody* 7.
- Khan, SD.** 2013. Consonant confusability and its relation to phonological dissimilarity. *Proceedings of the 21<sup>st</sup> International Congress on Acoustics.*
- Khan, SD** & Christina M. Esposito. 2011. Breathiness contrasts in consonants and vowels: a comparative study of Gujarati and White Hmong. *Proc. of the Int'l Congress of Phonetic Sciences* 17.
- Keating, Patricia, Christina M. Esposito, Marc Garellek, **SD Khan,** & Jianjing Kuang. 2011. Phonation contrasts across languages. *Proceedings of the International Congress of Phonetic Sciences* 17.
- Keating, Patricia, Christina M. Esposito, Marc Garellek, **SD Khan,** & Jianjing Kuang. 2010. Phonation contrasts across languages. *UCLA Working Papers in Phonetics* 108.
- Khan, SD.** 2007. Similarity avoidance in East Bengali fixed-segment reduplication. In: Bainbridge, Erin & Brian Agbayani (eds.) *Proceedings of the thirty-fourth Western Conference on Linguistics* 2006, 257-271. Fresno: California State University.
- Khan, SD.** 2007. Phrasing and focus in Bengali. Workshop paper for the Int'l Congress of Phonetic Sciences Satellite Workshop on Intonational Phonology: Understudied or Fieldwork Languages.
- Khan, SD.** 2007. The distribution and realization of H tones in Bengali. *UCLA Working Papers in Phonetics* 106, 34-40.

Esposito, Christina M., **SD Khan**, & Alex Hurst. 2005. Breathy nasals and /Nh/ clusters in Bengali, Hindi, and Marathi. *UCLA Working Papers in Phonetics* 104, 82-106.

---

## POPULAR PUBLICATIONS

**Khan, SD**. 2021. The diverse and continuing evolution of Bangla. *The Daily Star: Amar Ekushey Supplement*. Dhaka. Link: <https://www.thedailystar.net/supplements/news/the-diverse-and-continuing-evolution-bangla-2048249>

**Khan, SD**. 2018. Amago bhasha: in celebration of our ethnic and linguistic diversity. *The Daily Star: Amar Ekushey Supplement*. Dhaka. Link: <https://www.thedailystar.net/supplements/amar-ekushey-2018/amago-bhasha-1537534>

Yu, Kristine M., **SD Khan**, Alejandrina Cristia, Huei-Mei Liu, & Megha Sundara. 2011. The joint purpose of pitch patterns in “motherese”: drawing attention and conveying language structure. Popular version of paper 5aSCa3. Acoustical Society of America’s World Wide Press Room. Link: [http://acoustics.org/pressroom/httpdocs/162nd/Yu\\_5aSCa3.html](http://acoustics.org/pressroom/httpdocs/162nd/Yu_5aSCa3.html)

**Khan, SD**. 2009. The spirit of universality. *Star Weekend Magazine* 8(58). Dhaka. Link: [http://www.thedailystar.net/magazine/2009/02/03/special\\_feature.htm](http://www.thedailystar.net/magazine/2009/02/03/special_feature.htm)

**Khan, SD**. 2004. Speaking of German...: exploring the dialects of everyone’s favorite ‘language’. *Let’s Go: Germany*. New York: St. Martin’s, 60.

---

## WORK IN PROGRESS

Yu, Kristine M., **SD Khan**, & Megha Sundara. Intonational phonology in Bengali and English infant-directed speech: linking F0 range expansion, lengthening, and predictability. *Languages* special issue: Advances in the Acquisition of Prosody. Pending minor revisions.

Gope, Amalesh, Tulika Gogoi, & **SD Khan**. Post-lexical prosody in Sylheti: the coexistence of lexical tone and intonational pitch accents. Under review.

Jun, Sun-Ah & **SD Khan** (eds.). *Prosodic Typology III*. Oxford University Press. In preparation.

Jun, Sun-Ah & **SD Khan**. Introduction to Volume III. Chapter 1. In preparation.

**Khan, SD**. The intonational typology of South Asian languages. Chapter 15. In preparation.

Jun, Sun-Ah & **SD Khan**. Prosodic typology. Chapter 16. In preparation.

**Khan, SD**, Adam Chong, & Yu Tanaka. K’iche’, West Central. Revising for resubmission.

**Khan, SD**. Gradient similarity avoidance in Bengali echo reduplication. Revising for resubmission.

Akeed, Renata, Karina Bary, Owen Fidler, Jojo Hartman, & **SD Khan**. Bangla Sign Language: a phonetic sketch and lexical comparison with Indo-Pakistani Sign Language (IPSL). In preparation.

**Khan, SD**. Consonant confusability in Bengali. In preparation.

**Khan, SD**, Kara Becker, & Lal Zimman. The acoustics of perceived creaky voice in American English. In preparation.

Joshi, Kinjal & **SD Khan**. Exhaustive movement, exhaustive tone: a syntactic-prosodic investigation of Gujarati. In preparation.

Gope, Amalesh & **SD Khan**. Sylheti, Cachar variety. In preparation.

Gope, Amalesh & **SD Khan**. Prosodic marking of focus in Sylheti. In preparation.

**Khan, SD**, Christina M. Esposito, & Kinjal Joshi. Gujarati. In preparation.

**Khan, SD**. Measuring phonological (dis)similarity: echo reduplication, lexical cooccurrence, and confusability. In preparation.

---

## CONFERENCE PRESENTATIONS

Akeed, Renata, Owen Fidler, Jojo Hartman, & **SD Khan**. 2025. A tale of two Bengali sign languages: a lexical comparison of Bangla Sign Language (BaSL) and West Bengal Sign Language (WBSL). Sign Language Contact, Variation, and Change, University of Birmingham.

Esposito, Christina M., Kevin Schäfer, & **SD Khan**. 2023. Phonation and aging in White Hmong. Poster and panel discussant, special session: the sounds of ageing. ICPhS 20, Prague, 10 Aug.

**Khan, SD**. 2023. Intonation in a “linguistic area”: building an intonational typology of South Asia. Invited keynote speaker, Speech Units Workshop, University of Zürich, 17 Apr.

Joshi, Kinjal & **SD Khan**. 2021. Exhaustive movement, exhaustive tone: a syntactic-prosodic investigation of Gujarati. Talk (virtual), (Formal) Approaches to South Asian Languages 11, Minneapolis, 27 Mar.

Berkson, Kelly, Christina M. Esposito, **SD Khan**, & Max Nelson. 2019. Distinguishing breathy consonants and vowels in Gujarati. Talk, Int'l Congress of Phonetic Sciences 19, Melbourne, 9 Aug.

**Khan, SD**. 2019. InTraSAL: an intonational model for South Asian languages. Poster, ICPhS Satellite Mtg on the Intonational Phonology of Typologically Rare or Understudied Lgs, Melbourne, 4 Aug.

**Khan, SD**. 2019. Palatalization and velarization in Malayalam nasals. Poster, Formal Approaches to South Asian Languages 9, Portland, 17 Mar.

**Khan, SD**. 2018. Building a unified intonational model for South Asian languages: InTraSAL. Invited plenary talk, South Asian Languages Analysis Roundtable 34, Konstanz, 19 Jun.

Becker, Kara, **SD Khan**, & Lal Zimman. 2017. Creaky voice beyond binary gender. Talk, Annual Meeting of the American Dialect Society, Austin, 6 Jan.

**Khan, SD**. 2016. The intonation of South Asian languages: towards a comparative analysis. Invited plenary talk, Formal Approaches to South Asian Languages 6, Amherst, 12 Mar.

Nelson, Max, Kelly Harper Berkson, Christina M. Esposito, & **SD Khan**. 2016. Perception of breathy phonation in Gujarati. Poster, Formal Approaches to South Asian Languages 6, Amherst, 13 Mar.

**Khan, SD**, Kara Becker, & Lal Zimman. 2016. Acoustic correlates of perceived creak in a controlled sample of American English. Poster, Linguistics Society of America 90, Washington, 9 Jan.

**Khan, SD**, Kara Becker, & Lal Zimman. 2015. The acoustics of perceived creaky voice in American English. Talk, Acoustical Society of America 170, Jacksonville, 3 Nov.

Becker, Kara, **SD Khan**, & Lal Zimman. 2015. Creaky voice in a diverse gender sample: Challenging ideologies about sex, gender, and creak in American English. Talk, New Ways of Analyzing Variation 44: Intersections, Toronto, 24 Oct.

**Khan, SD.** 2014. Consonant confusability and similarity avoidance patterns. Poster, Manchester Phonology Meeting 22, Manchester, 30 May.

Yu, Kristine M., **SD Khan**, & Megha Sundara. 2014. Intonational phonology in Bengali and English infant-directed speech. Talk, Speech Prosody 7, Dublin, 23 May.

**Khan, SD** & Kristine M. Yu. 2014. Intonational phonology in infant-directed speech. Poster, Linguistics Society of America 88, Minneapolis, 4 Jan.

**Khan, SD.** 2014. Consonant confusability and similarity avoidance patterns. Poster, Linguistics Society of America 88, Minneapolis, 3 Jan.

**Khan, SD.** 2013. Consonant confusability and its relation to phonological dissimilarity. Poster, International Congress on Acoustics 21, Montreal, 4 Jun.

Keating, Patricia, Jianjing Kuang, Christina M. Esposito, Marc Garellek, & **SD Khan**. 2012. Multi-dimensional phonetic space for phonation contrasts. Poster, Lab Phonology 13, Stuttgart, 27 Jul.

Keating, Patricia, Jianjing Kuang, Christina M. Esposito, Marc Garellek, & **SD Khan**. 2012. Phonation in nine languages. Poster, Acoustics, Hong Kong, 15 May.

Yu, Kristine M., **SD Khan**, & Megha Sundara. 2011. A cross-linguistic investigation of information structure in infant-directed speech. Poster, Experimental and Theoretical Advances in Prosody 2, Montreal, 23 Sep.

**Khan, SD** & Christina M. Esposito. 2011. Breathiness contrasts in consonants and vowels: a comparative study of Gujarati and White Hmong. Poster, International Congress of Phonetic Sciences 17, Hong Kong, 18 Aug.

Keating, Patricia, Christina M. Esposito, Marc Garellek, **SD Khan**, & Jianjing Kuang. 2011. Phonation contrasts across languages. Talk, Int'l Congress of Phonetic Sciences 17, Hong Kong, 17 Aug.

**Khan, SD**, Kristine M. Yu, & J'aime Roemer. 2011. Speech rhythm and f<sub>0</sub> patterns in Bengali: a study of infant-directed speech. Poster, Acoustical Society of America 161, Seattle, 27 May.

Esposito, Christina M. & **SD Khan**. 2010. Breathiness contrasts across consonants and vowels: a comparative study of Gujarati and White Hmong. Poster, Pan-American/Iberian Meeting on Acoustics 2, Cancún, 19 Nov.

Keating, Patricia, Christina M. Esposito, Marc Garellek, **SD Khan**, & Jianjing Kuang. 2010. Phonation contrasts across languages. Poster, Laboratory Phonology 12, Albuquerque, 10 Jul.

**Khan, SD.** 2010. Breathy phonation in Gujarati: an acoustic and electroglottographic study. Poster, Acoustical Society of America 159, Baltimore, 23 Apr.

Kreiman, Jody, Bruce R. Gerratt, & **SD Khan**. 2009. Effects of native language perception on H1-H2. Poster, Acoustical Society of America 158, San Antonio, 29 Oct.

**Khan, SD.** 2009. An acoustic and electroglottographic study of breathy phonation in Gujarati. Poster, Acoustical Society of America 158, San Antonio, 27 Oct.

**Khan, SD** & Victoria Thatte. 2009. The phonetics of contrastive phonation in Gujarati. Poster, Acoustical Society of America 157, Portland, 19 May.

- Khan, SD.** 2007. Phrasing and focus in Bengali. Poster, ICPHS Satellite Workshop on Intonational Phonology: Understudied or Fieldwork Languages, Saarbrücken, 5 Aug.
- Khan, SD.** 2006. Bengali intonational structure: evidence for three levels of structure. Poster, Joint meeting of the Acoustical Society of America & the Acoustical Society of Japan 4, Honolulu, 29 Nov.
- Khan, SD.** 2006. Similarity avoidance in East Bengali fixed-segment reduplication. Talk, Western Conference on Linguistics 34, Fresno, 27 Oct.
- Khan, SD.** 2006. Similarity avoidance in Bengali fixed-segment reduplication. Poster, Manchester Phonology Meeting 14, Manchester, 27 May.
- Esposito, Christina M., **SD Khan**, & Alex Hurst. 2005. Breathiness in Indic languages. Poster, Acoustical Society of America 149, Vancouver, 17 May.
- 

## COLLOQUIA AND OTHER PRESENTATIONS

- Khan, SD.** 2024. Intonation in a linguistic area: building an intonational typology of South Asia. Colloquium, University of Washington, 2 Feb.
- Khan, SD.** 2023. Beyond the binary: creaky voice, gender, and the variationist enterprise. Colloquium (virtual), Center for Language Sciences, Macquarie University, 16 Nov.
- Joshi, Kinjal & **SD Khan**. 2021. Exhaustive movement, exhaustive tone: a syntactic-prosodic investigation of Gujarati. Talk (virtual), LingOrg seminar series, University of Oslo, 22 Mar.
- Khan, SD.** 2021. Word-level intonation across Rajasthan and South Asia. Invited symposium talk (virtual), Central University of Rajasthan, 18 Mar.
- Khan, SD.** 2021. Word-level intonation across South Asian languages. Invited talk (virtual), Lab Lunch, University of Glasgow, 4 Mar.
- Khan, SD.** 2020. Step 1: Build an intonational model for South Asian languages. Step 2: (on hold). Talk (virtual), Advanced Research Collaborative seminar series, CUNY Graduate Center, 5 Nov.
- Khan, SD.** 2020. InTraSAL: An intonational model for South Asian languages. Invited talk (virtual), IndoPhon, 5 Oct. Link: <https://www.youtube.com/watch?v=aVgp62yUnso&t=3744s>
- Khan, SD.** 2020. Building a unified intonational model for South Asian languages: InTraSAL. Colloquium, University of Michigan (virtual), 13 Mar.
- Khan, SD.** 2020, 2018, 2016. Creaky voice beyond binary gender. Guest lectures (virtual), Macalester College.
- Khan, SD.** 2016. Dissimilarity three ways: Bengali coronals seen through echo reduplication, confusability, and lexical statistics. Colloquium, IIT Delhi (virtual), 18 Nov.
- Khan, SD.** 2016. Rising contours across South Asian languages: towards a comparative intonational phonology. Poster, UCLA Linguistics 50<sup>th</sup> Anniversary Celebration, 13 Jun.
- Yu, Kristine M., **SD Khan**, & Megha Sundara. 2016. Intonational phonology in Bengali and English infant-directed speech. UCLA Phonetics Seminar (virtual), 16 May.
- Khan, SD.** 2016. Phonological (dis)similarity: reduplication, confusability, and the lexicon in Bengali. GLOSS colloquium series, University of Oregon, 5 Feb.

**Khan, SD.** 2013. Intonation for infants: the prosody of “motherese”. Reed College, 14 May.

**Khan, SD.** 2013. Structure preservation in intonation: investigating the prosody of infant-directed speech in English and Bengali. University College London, 25 Feb.

**Khan, SD.** 2012. Towards a model of Amharic intonation. Reed College, 13 Dec.

**Khan, SD.** 2012. What echo reduplication reveals about phonological similarity. Ling Lang Lunch, Brown University, 26 Apr. / Phonology Circle, MIT, 25 Apr. / Reed College, 20 Apr.

**Khan, SD.** 2011. Intonation and meaning: Pitch accent type and focus type. Formal Semantics Reading Group, Brown University, 6 Apr.

**Khan, SD.** 2009. Static palatography and linguography. Cornell University, 25 Nov.

**Khan, SD.** 2009. Intonation and focus prosody in Bengali. Cornell, 19 Nov. / Reed College, 22 Apr.

**Khan, SD.** 2006. Bengali prosodic word phenomena. Prosem. on the Prosodic Word, UCLA, 5 Dec.

**Khan, SD.** 2005. Similarity avoidance in fixed-segment reduplication. Phono. Sem., UCLA, 31 May.

**Khan, SD.** 2005. Reduplicative constructions in Cantel Kiche. Phonology Sem., UCLA, 25 Mar.

**Khan, SD.** 2005. Morphological constraints on reduplicant shapes. Phonology Sem., UCLA, 1 Feb.

---

## ACADEMIC POSITIONS

Professor	Reed College	2022–current
Distinguished Scholar, visiting	CUNY Graduate Center	2020–21
Associate Professor	Reed College	2016–22
Assistant Professor	Reed College	2013–16
Assistant Professor, visiting	Reed College	2012–13
Assistant Professor, visiting	Brown University	2010–12
Lecturer	UCLA	2010
Assistant Professor, visiting	Cornell University	2009
Adjunct Professor	Pitzer College	2009

---

## TEACHING

### Reed College

Ling 211: Introduction to Linguistic Analysis (co-taught; Fa2012–14, 2016–19, 2021–25)

Ling 312: Topics in Linguistic Analysis: Advanced Phonology (Fa2012)

Ling 320: Phonetics (Fa2013, 2023; Sp2013, 2015, 2017–20, 2022–26)

Ling 321: Phonological Theory (Fa2013–14, 2016–19, 2021–22, 2024)

Ling 322: Research Topics in Phonetics & Phonology (Sp2015, 2018; Fa2021, 2023, 2025)

Ling 331: Laboratory Phonology (Sp2014)

Ling 336: Field Methods (Amharic: Fa2012; Luo: Fa2016; Malayalam: Fa2018; Kazakh: Sp2024)

Ling 337: Methods of Design and Analysis (Fa2017, 2019, 2022, 2024–25)

Ling 350: Languages of South Asia (Sp2014, 2017, 2020, 2023, 2026)

Ling 352: Intonation (Fa2014; Sp2013, 2019, 2022, 2025)

MALS/Ling 520: Talking about talking: descriptions of pronunciation across time & space (Su2024)

#### Brown University

CLPS 1310: Introduction to Phonological Theory (Sp2011, Fa2011)

CLPS 1381: Topics in Phonetics and Phonology: Intonational Phonology (Fa2010, Sp2012)

CLPS 1382: Sounds of the World's Languages (Fa2011)

#### Cornell University

Ling 3301: Introduction to Phonetics (Fa2009)

Ling 4419: Phonetics I, graduate level (Fa2009)

#### Pitzer College

Ling and Cognitive Science 10: Introduction to Linguistics (Sp2009)

#### UCLA

Ling 20: Introduction to Linguistics (Sp2010)

Ling 120A: Introduction to Phonology (Sp2007, TA for Bruce Hayes)

Ling 103: Introduction to Phonetics (Sp2006, TA for Patricia Keating)

Honors Collegium 56: Language as a Window to the Mind (Wi2006, TA for Susan Curtiss)

Ling 114: American Indian Linguistics (Sp2005, Fa2005, TA for Pamela Munro)

Ling 1: Study of Language (Wi2005, TA for Daniel Buring)

---

## ADVISING

#### Reed College senior theses

Tommy Schacht (2025)

Aidan Mokalla (2024-25): A computational phonological approach to mondegreens

Josue Sandoval (2024-25): Affricates and indigenous identity in Nawat and Salvadoran Spanish

Naomi Smith (2024-25): Creaky voice on reality television, using an audience design approach

Leo Latimer (2023-24): EGG and acoustic study of incomplete neutralization in German & English

Miles Sanford (2023-24): Raciolinguistic indexical perception of L-vocalization across regions

Eli Franz (2023): Correspondence relations in fixed-segment echo word reduplication

Anna Farrar (2022-23): Indexical transfer of the Beijing Smooth Operator into Montréal French

Satchel Petty (2022-23): Vowel dynamicism in biracial Japanese Americans

Max Wolf-Valdés (2022-23): Short-term acquisition of focus prosody via Spanish instruction

Montreal Benesch (2021-22): Variation in /s/ center of gravity in genderfluid individuals

Sam Scull (2021-22): Phonetic realization of tone depressor consonants in Shona

Gregory Tanaka (2021-22): Acquisition of Russian "default stress" in English-speaking learners

Flora Carey (2019-20): Word memorization through sound-symbolic tone & segment mapping

Isaac Gray (2019-20): Acquisition of Russian intonation & Mandarin tone by English-speakers

Liv Johnson (2019-20): Social factors and gender-fair language engagement

Liliana Santos-Vallejo (2018-19): TH-stopping and ING-fronting as a marker of Chicano English

Mica Semrau (2018-19): Undoing the pin-pen merger

Ally Watson (2018-19): Production and perception of rhotics in French-aligned Lebanese

Elaina Wittmer (2018-19): Complex consonants and language games in Shona

Clark Chang (2017-18): Identity on 4chan: online communities of practice



Liam Käch (2017–18): Productivity of noun and verb morphophonology in loans to Amharic  
Tomu (2017–18): Semiotics of music, dance, and vocal sampling in Chicago footwork  
Greeni Sullivan (2017): Grammaticality and intelligibility of intonation in text-to-speech synthesis  
Philip Georgis (2016–17): Lexical prosody as a marker of national identity in BCMS  
Kieran Chase (2016–17): Infant-directed speech in transgender-cisgender couples  
Yevgeniy Melguy (2014–15): Bilinguals' perception of (not-so-)non-native stop contrasts  
Frida Cruz (2014–15): Sound symbolism in San Juan Quiahije Chatino  
Geneviève Meadow-Jenkins (2014): Afro- and Indo-Trinidadian English Creole intonation  
Aeryn Appleby (2014): An ethnographic investigation of metaphor and labels in disability politics  
Katina Papadakis (2013–14): Acoustic and aerodynamic study of nasal spreading in Guaraní  
Brice Roberts (2013–14): Searching for stress in Shanghainese tone domains  
Eleanor Kinney (2013–14): Exploration of sound symbolism in shape and affect association  
Dean Schmeltz (2013–14): Effect of bilingualism on foreigner-directed speech  
Jean Yoon (2013): Language ideologies and cultural perceptions of Korean English students  
Sara Mulliner (2012–13): Sociophonetic investigation of stances in a fierce femininity  
Kimberly Durkin (2012–13): Computer input methods for non-Latin-alphabetic languages  
Rosemary Ingham (2012–13): Effect of native language on acquisition of Japanese formality

#### Honors thesis

Shea Husband, Macalester College (2021–22): *ijjok* in queer Korean YouTube personalities  
Anqi Zhang, Brown University (2011–12): Harmonic Grammar analysis of Middle Egyptian

#### Independent study

Hyun Joon Seol, Cornell University (2009): Acoustic study of Korean tense consonant properties

#### Dissertation committee (external member)

Aarugonda A. Vardhani, English & Foreign Lgs Univ. (2024–2025): Echo words in South Asian lgs.  
Tulika Gogoi, Tezpur University (2024): Tone-intonation interaction in Sylheti and Chokri  
Christine Prectel, UCLA (2020–2023): Stress & tonal rhythm strength in Eng., Bengali, Uyghur  
Purnima Thakur, City University of New York (2019–): Intonational phonology of Marathi  
Sushant Devlekar, Mumbai University (2019–): Duration in Marathi

#### Reed College junior faculty

Nicole James, Chemistry (2022–24)

---

### RESEARCH AND CONSULTING POSITIONS

Director, Reed College Laboratory of Linguistics (2013–15, 2016–20, 2021–current)

*Building, equipping, and maintaining Reed College's laboratory for phonetic research*

Transcriber, Plymouth University School of Psychology (2014)

*Translating and transcribing a corpus of Bengali child speech*

Consultant, Talaria Intercultural Communication Workshop (2009–12)

*Improving a tutorial to help healthcare professionals acquire English phonology and intonation*

Laboratory Assistant for Jody Kreiman, UCLA Head & Neck Surgery (2009, 2010)

*Investigating the perception of voice quality distinctions by Gujarati and Thai speakers*

Staff Research Associate for Patricia Keating, UCLA Linguistics (2008)

*Investigating the production of breathy-voiced phonation in Gujarati*  
Summer Research Mentorship with Sun-Ah Jun, UCLA Linguistics (2006)  
*Running experiments on intonation and focus realization in Bengali*  
Research Assistant for Colin Wilson, UCLA Linguistics (2005)  
*Cataloguing long-distance assimilatory processes crosslinguistically*

---

## REVIEWING

Co-editor

*Journal of South Asian Linguistics* (2016–current)

Guest co-editor

*Languages: Special issue exploring the interaction between phonation and prosody* (2020–22)

Senior panelist

Linguistics Program, National Science Foundation (2019–22)

External reviewer

Linguistics Program, National Science Foundation (2013, 2023)

Tenure Portfolio, Pomona College (2023)

Tenure Portfolio, Macalester College (2023)

Tenure Portfolio, Swarthmore College (2021)

Book chapter reviewer

Jun, Sun-Ah & SD Khan (eds.) *Prosodic Typology III*. Oxford University Press (2020–22)

Cruz, Marisa, Pedro Oliveira, & Sónia Frota (eds.) *Prosodic variation (with)in languages:*

*Intonation, phrasing and segments*. Book series: Ball, Martin J. & Pascal van Lieshout (eds.)

*Studies in Phonetics and Phonology*. (2016)

Jun, Sun-Ah (ed.) *Prosodic Typology II*. Oxford University Press (2010–12)

Journal submission reviewer

*California Linguistic Notes* (2013)

*Glossa* (2018–19)

*Journal of the Acoustical Society of America* (2015–16, 2016, 2017)

*Journal of the International Phonetic Association* (2015, 2016\*2, 2018, 2019, 2020, 2021)

*Journal of Phonetics* (2013, 2014, 2016\*2, 2019)

*Journal of South Asian Linguistics* (2012, 2013–14, 2015, co-editor 2016–current)

*Laboratory Phonology* (2017, 2019, 2020)

*Language* (2020)

*Language and Cognitive Processes* (2013)

*Language and Speech* (2012–13, 2014, 2015, 2018)

*Language Resources and Evaluation* (2017)

*Languages* (2021)

*Language Sciences* (2017)

*Lingua* (2015\*2)

*Phonetica* (2017, 2019, 2020, 2021)

*Phonology* (2015–16)

#### Conference proceedings reviewer

Austronesian Formal Linguistics Association-24 (2018)

#### Conference abstract reviewer

Annual Meeting of the Linguistics Society of America (2013-15, 2017)

Austronesian Formal Linguistics Association (2017)

Cognitive Science (2014-15)

Formal Approaches to South Asian Languages (2016-22)

Interspeech (2013-15)

Laboratory Phonology (2016-18)

South Asian Languages Analysis Roundtable (2018)

Speech Prosody (2016, 2022)

West Coast Conference on Formal Linguistics (2017)

#### Student poster judge

Meeting of the Acoustical Society of America (Fall 2015, Spring 2018)

---

### OTHER SERVICE

#### Department/division chair

Department of Linguistics, Reed College (Spring 2017, 2018-20, 2024-26)

Division of Philosophy, Religion, Psychology, and Linguistics, Reed College (2023-24)

#### Committee member

Committee on Academic Policy and Planning, Reed College (2025-26)

Committee on Advancement and Tenure, Reed College (2022-23)

Fellowships & Awards Committee, Reed College (2021-22, Fulbright interviewer 2022-25)

Accessibility Committee, Reed College (2018-19)

Committee on Academic Support Services, Reed College (2017-18)

Committee on Alcohol and Other Drugs, Reed College (2017-18)

Alcohol and Other Drugs Review Panel, Reed College (2017-18)

Library Board, Reed College (2014-15)

Institutional Review Board, Reed College (2013-15, 2016-17; chair 2019-20, 2021-22, 2023-25)

Colloquium Committee, UCLA Linguistics (2005-07)

Open House Committee, UCLA Linguistics (2004-06)

#### Committee secretary

Division of Philosophy, Religion, Psych, & Linguistics, Reed College (2014-15, 2018-19, 2022-23)

Graduate Linguistics Circle, UCLA Linguistics (2005-07)

#### Search committee member

Visiting faculty in Linguistics, Reed College (2025: hired Allison Casar)

Visiting faculty in Anthropology, Reed College (2023: hired Tarık Nejat Dinç)

Visiting faculty in English, Reed College (2022-23: hired Peter Miller)

Visiting faculty in Linguistics, Reed College (2022-23: hired Neda Todorović)

Tenure-track faculty in Economics, Reed College (2022-23: hired Erin Cottle Hunt)

Dean of Institutional Diversity, Reed College (2022: hired Phyllis Esposito)

Visiting faculty in Linguistics (committee chair), Reed College (2019-20: hired Alice Shen)

Tenure-track faculty in Psychology, Reed College (2019-20: hired Kevin Holmes)

Visiting faculty in Linguistics, Reed College (2018-19: hired Roslyn Burns)

President, Reed College (2018-19: hired Audrey Bilger)

Visiting faculty in Linguistics, Reed College (2016: hired Julia Thomas Swan)

Visiting faculty in Linguistics, Reed College (2016: hired Katy McKinney-Bock)

Visiting faculty in Linguistics, Reed College (2015: hired James Gruber)

Visiting faculty in Political Science, Reed College (2014: hired David Ciuk)

#### Search committee external interviewer

Faculty admin coordinator for Eng, Hum, Ling, & Phil, Reed College (2023: hired Adam Aristo)

Tenure-track faculty in Psychology, Reed College (2018)

Faculty admin coordinator for Anthro, Ling, & Poli Sci, Reed College (2016: hired Emily Hebbbron)

Tenure-track faculty in Religion, Reed College (2014: hired Kristin Scheible)

Visiting faculty in Linguistics, Reed College (2013: hired Katy McKinney-Bock)

Visiting faculty in Linguistics, Reed College (2013: hired Lal Zimman)

#### Conference organizer

Formal Approaches to South Asian languages 9, Reed College (2019)

#### Conference special/satellite session co-organizer

Phonetics and phonology, (Formal) Approaches to South Asian Languages 10, Columbus (2020)

Intonational phonology of typologically rare or understudied lgs, ICPHS 19, Melbourne (2019)

Acoustics of South Asian languages, ASA 175, Minneapolis (2018)

#### Conference session chair

Phonology, (Formal) Approaches to South Asian Languages 12, Salt Lake City (2022)

Phonology and Phonetics I, LSA 95, San Francisco (2021)

Indo-Aryan syntax and semantics, Formal Approaches to South Asian Lgs 9, Portland (2019)

Phonetics and phonology, SALA 34, Konstanz (2018)

Prosody, LSA 92, Salt Lake City (2018)

Morphology and phonology: Learning and Predictability, LSA 91, Austin (2017)

Phonological and phonetic change, LSA 90, Washington (2016)

Rhythm and intonation, LSA 90, Washington (2016)

Contact-induced change, LSA 89, Portland (2015)

Phonological theory, LSA 89, Portland (2015)

Psycholinguistics of suprasegmentals, LSA 88, Minneapolis (2014)

#### Organization member

International Phonetic Association (2015-lifetime)

Association for Laboratory Phonology (2015-current)

North East Indian Linguistics Society (2015-current)

SProSIG: Special Interest Group on Speech Prosody (2014-current)

Linguistics Society of America (2006-lifetime)

Acoustical Society of America (2005-current, elected to Society: 2016)

#### Organization leadership

Faculty mentor, South Asian Union (2023-current)

Faculty for Justice in Palestine (2024-current)

Nominating committee, Association for Laboratory Phonology (2021-22)

#### Event co-organizer

Lavender Graduation (2025)  
Students for Justice in Palestine (SJP) Graduation (2024)  
LGBTQIA2S+ faculty socials (2017-22)  
RuPaul visit, Gray Fund (2017)  
Most-of-South-and-Southeast-Asian New Year events (2015-18, 2024)

#### Panelist

Reed Admissions Virtual Faculty Office Hours (2024)  
New Faculty Orientation (2021, 2022)  
Honor Principle and Academic Honesty, International Student Services (2021)  
Exploring Academic Careers at Liberal Arts Colleges & Universities, UC Davis (2018)  
Mellon Focus Group on Student Research (2017)  
Dealing with Data, Senior Thesis Writing Help (2016)  
Open Data and Open Science, Digital Scholarship Week (2016)  
Conducting quantitative research and analysis in linguistics (2012)

#### Commencement & convocation platform party

Name reader (2024)  
Student marshal (2025)  
Faculty marshal (2023, 2024)

#### Curriculum coordinator

Bangla School of Los Angeles (2007-10)

---

### FELLOWSHIPS AND AWARDS

Faculty Summer Scholarship Award (2025)	Reed College	\$1,550
<i>Towards the linguistic study of Bangla Sign Language lexicostatistics</i>		
Stillman Drake Award (2024-25)	Reed College	\$1,600
<i>Towards the linguistic study of Bangla Sign Language lexicostatistics</i>		
Stillman Drake Award (2023-24)	Reed College	\$1,600
<i>Towards the linguistic study of American Sign Language phonetics and phonology</i>		
Faculty Summer Scholarship Award (2023)	Reed College	\$1,500
<i>Supporting open access article publication, intonational transcription, and conference travel</i>		
Stillman Drake Award (2021-22)	Reed College	\$1,700
<i>Supporting travel to London to study Sylheti-Londoni intonation</i>		
Graves Award (2020-21)	Pomona College	\$11,000
<i>Supporting a sabbatical year working on a book chapter on South Asian intonation</i>		
Sabbatical Research Expense Funds (2020-21)	Reed College	\$7,800
<i>Supporting a sabbatical year working on a book chapter on South Asian intonation</i>		
Visiting Scholar Support Funds (2020-21)	CUNY Graduate Center	\$3,000
<i>Supporting a sabbatical year working on a book chapter on South Asian intonation</i>		
Stillman Drake Award (2019-20)	Reed College	\$1,500

*Supporting travel to New York City to set up contacts for sabbatical year*

Faculty Summer Scholarship Award (2019)	Reed College	\$1,500
<i>Supporting international travel to organize a satellite workshop in intonational typology</i>		
Stillman Drake Award (2018-19)	Reed College	\$1,500
<i>Supporting electroglottographic analysis of creaky voice in character performance</i>		
Stillman Drake Award (2017-18)	Reed College	\$1,200
<i>Towards recording connected speech in multiple South Asian languages</i>		
Faculty Summer Scholarship Award (2016)	Reed College	\$1,500
<i>Towards a comparative intonational phonological analysis of South Asian languages</i>		
Faculty Summer Scholarship Award (2015)	Reed College	\$1,500
<i>Towards an intonational phonological and voice quality transcription of English</i>		
Career Enhancement Fellowship Award (2015)	Woodrow Wilson Foundation	\$15,750
<i>Towards a 2015-16 junior sabbatical year</i>		
Stillman Drake Award (2014-15)	Reed College	\$1,000
<i>Towards urban field research on immigrant languages</i>		
Faculty Summer Scholarship Award (2014)	Reed College	\$1,300
<i>Towards a phonetic and phonological analysis of Cantel and Momostenango K'iche'</i>		
Stillman Drake Award (2013-14)	Reed College	\$4,000
<i>Towards sociolinguistic and acoustic research on creaky voice (with Kara Becker &amp; Lal Zimman)</i>		
New faculty startup funds (2013-17)	Reed College	\$105,000
<i>Towards building and equipping a new phonetics laboratory and supporting research</i>		
Faculty Summer Scholarship Award (2013)	Reed College	\$1,000
<i>Towards research in confusability of Bengali consonants in noise, babble, and quiet</i>		
Stillman Drake Award (2012-13)	Reed College	\$900
<i>Towards pilot research in confusability of Bengali consonants in noise, babble, and quiet</i>		
Dissertation Year Fellowship (2007-08)	UCLA Graduate Division	\$18,000
<i>Towards my dissertation on the intonational phonology and focus realization of Bengali</i>		
Quality of Graduate Education Award (2007)	UCLA Linguistics Department	\$2,394
<i>Towards developing a prosodic model of Bengali</i>		
Summer Research Mentorship Program (2006)	UCLA Graduate Division	\$5,200
<i>Towards investigating the prosodic realization of focus in Bengali</i>		
Lesser-Studied Languages Fieldwork Award (2005)	UCLA Linguistics Department	\$243
<i>Towards research in breathy phonation in Bengali, Hindi, and Marathi</i>		
Pauley Fellowship (2004, 2006-07)	UCLA Graduate Division	\$28,000

---

## **LANGUAGE SKILLS**

Native or near-native fluency: English, Bengali

Language study: Spanish, American Sign Lg (ASL), German, Mandarin, Arabic (MSA), Chickasaw

Linguistic research: K'iche', Upper Saxon, Kazakh, Luo, Amharic, Sylheti, Gujarati, Marathi, Malayalam, Thai, Bangla Sign Language (BaSL), West Bengal Sign Language (WBSL), Indian Sign Language (ISL), Pakistani Sign Language (PSL)

---

## **TECHNICAL SKILLS**

Laboratory equipment: electroglottography, aerodynamics (airflow), ultrasound, static palatography

Recording, sound editing, acoustic analysis, forced-choice experimental design, synthesis, and data analysis: Praat, Audacity, VoiceSauce, EggWorks, NORM, R, Aeroview, Dualview

*Updated 4 June 2025*