

Location: 2304 SE Main St, Portland, OR 97214

Rent: \$2,250/month

Lease: One-year lease preferred; short-term (3–6 months) considered

Availability: December 1, 2025

This beautifully maintained vintage upper unit offers classic Portland character in a quiet, centrally located neighborhood near Ladd's Addition and the Hawthorne district. The home provides privacy, abundant natural light, and thoughtful updates while preserving original architectural details.

Unit Features:

- 2 bedrooms, 1 bathroom
- Exceptional natural light throughout
- Fresh interior paint
- Brand-new shower
- Brand-new in-unit washer and dryer
- Two dedicated storage rooms
- Front porch and side porch elevated above the street
- Vintage architectural details

Additional Information:

- Garbage service included
- Utilities separately metered and paid by tenant
- Free off-street parking
- Non-smoking preferred
- Approximately 2 miles / 8-minute drive to Reed College
- Furnishing option available: The unit can be furnished for the right tenant; inquiries and reasonable furnishing requests are welcome.

This home is well-suited for visiting faculty, university staff, or professionals, including those on sabbatical or short-term academic appointments.

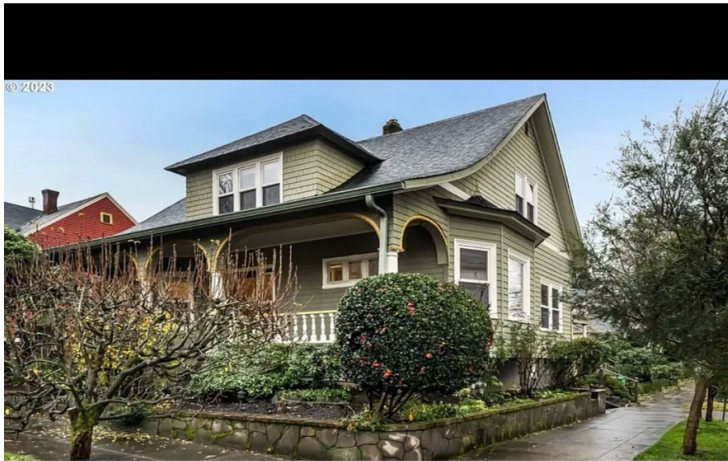
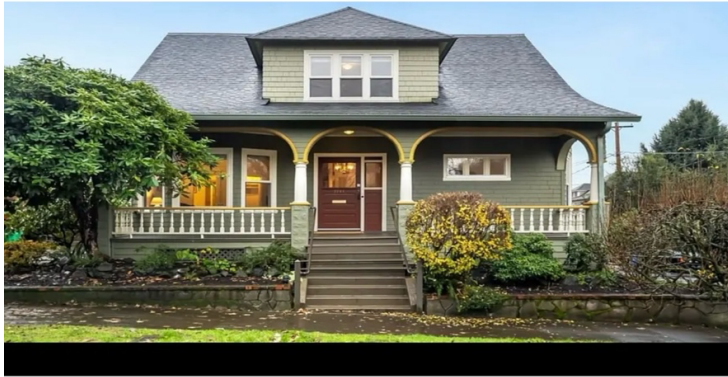
Showings available by appointment.

Contact:

Hellen

415-960-9677

Upendo.bs.llc@gmail.com



© 2023

