

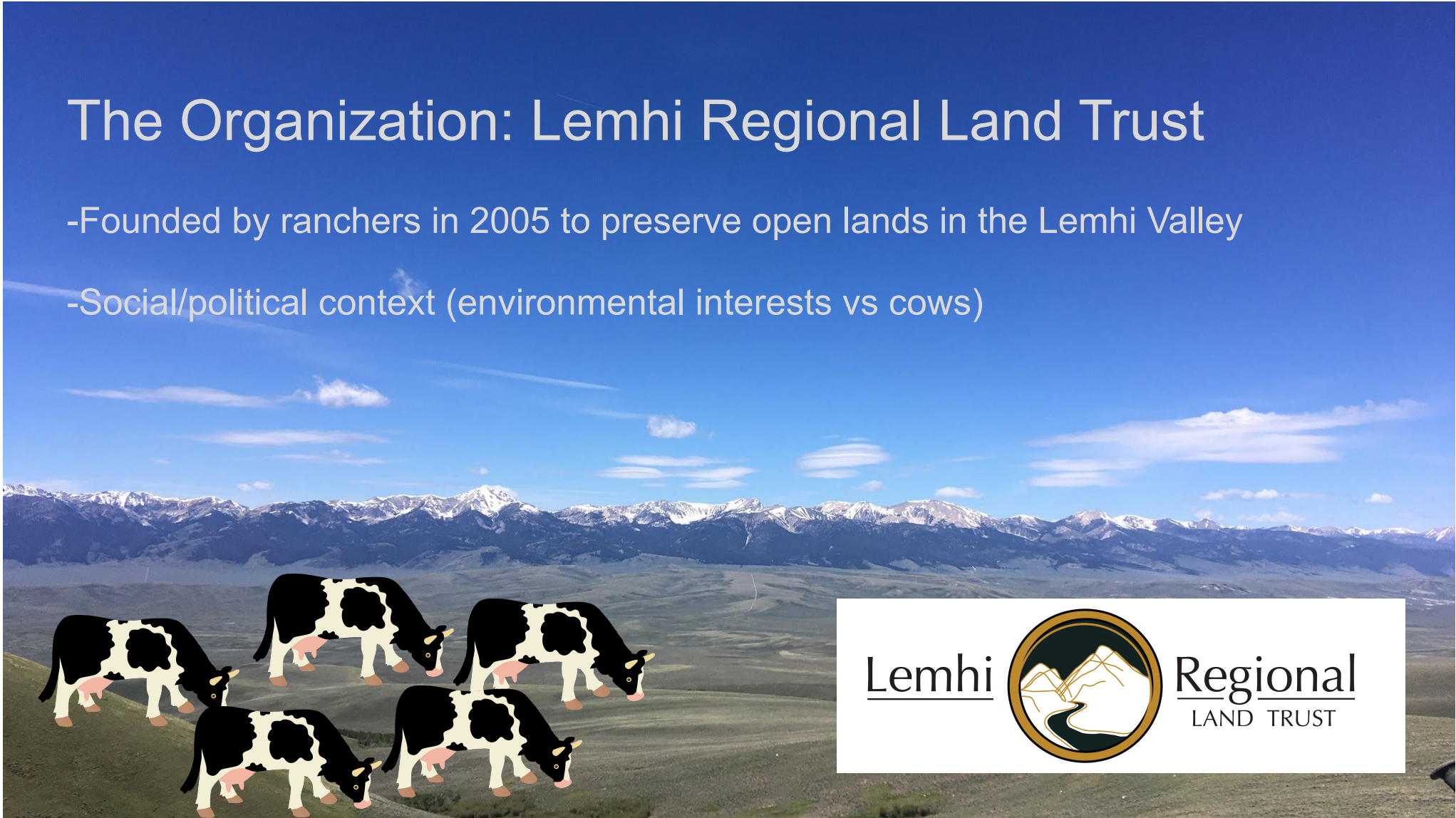
# Working Landscapes in the American West

Summer 2019 with the Lemhi Regional Land Trust

Mary Snook

# The Organization: Lemhi Regional Land Trust

- Founded by ranchers in 2005 to preserve open lands in the Lemhi Valley
- Social/political context (environmental interests vs cows)





# Conservation Easements

-Private land that is legally protected from subdivision and development





# Other Projects

- Salmon School Garden
- Stream restoration with BPA funding
- Community outreach (Farmers' Market)





# Firewise Garden



Educate Salmon residents on defensible spaces and firewise.

Showcase potential of fire-resistant plants for landscaping and protection.





# What does all this do?

-For wildlife

-For people





# Contacts (for more information):

<http://www.lemhilandtrust.org/conservation-easements-101/>

Jennifer Smith, Executive Director ([jsmith@lemhilandtrust.org](mailto:jsmith@lemhilandtrust.org))

Jim Roscoe, Land Protection Coordinator ([jroscoe@lemhilandtrust.org](mailto:jroscoe@lemhilandtrust.org))

Breann Green, Restoration and Stewardship Coordinator ([breann@lemhilandtrust.org](mailto:breann@lemhilandtrust.org))

Charli Williams, Outreach Coordinator ([charli@lemhilandtrust.org](mailto:charli@lemhilandtrust.org))

Thank you to all of these people,  
and to the ESSE fellowship for  
this experience and all the  
learning that came with it!

