

# Salmon Valley Stewardship

Finn Newman



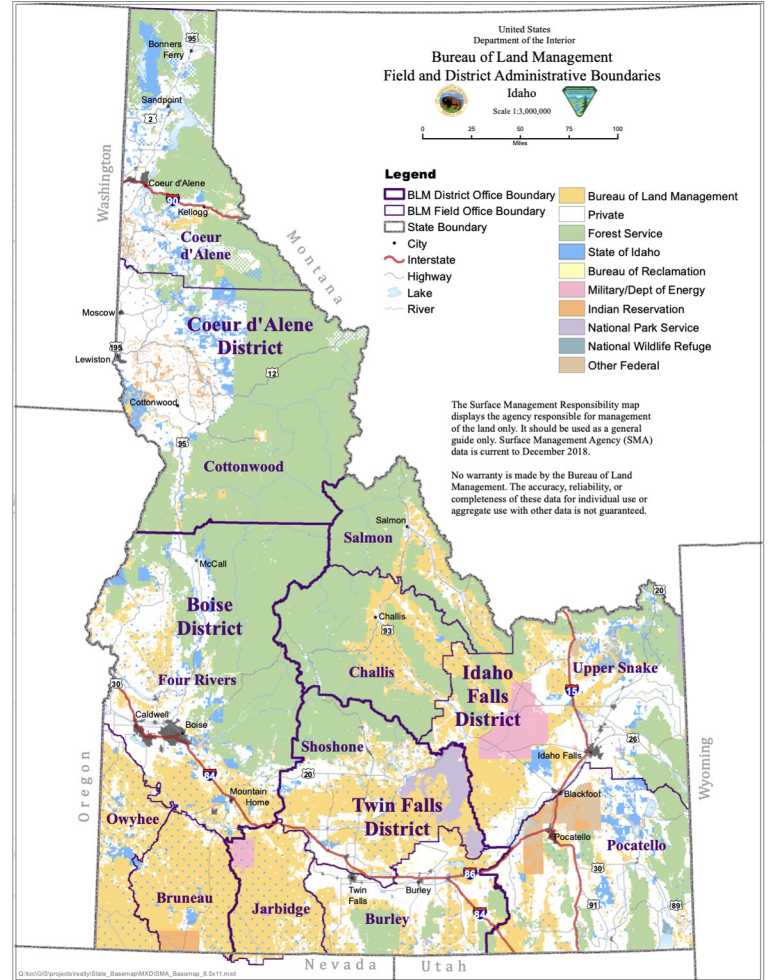
# Who am I?

- ES–History Junior
- Worked in Mendocino County last summer for Paul Siegel Salmon Restoration Internship
- Interested in forestry, history, and ecology
- One of two SVS Reed interns this year
- Had only been to Idaho once before this internship!





# Where is Salmon, Idaho?



# What is Salmon Valley Stewardship?

- Nonprofit conservation partner for different agencies
- Works with BLM, IDFG, USFS, Lemhi County, LRLT
- Community-minded conservation and sustainability
- Responsible for summer camps, community events, coordination with Swift River Farm
  - I was mostly on the natural resources side!





# What did I do?

- Inventoried greater sage-grouse habitat using AIM protocol
- Monitored monarch butterfly habitat and development
- Planted whitebark pine
- Electrofished with the IDFG
- Timber cruising
- Hiked and climbed mountains a lot!



# AIM

- AIM is an initiative to inventory public lands and greater sage-grouse habitat
- Includes LPI, soil science, botany, and some basic hydrology
- Made up the bulk of my internship
- Led by Vickie Van Sickle, longtime range technician for Salmon BLM



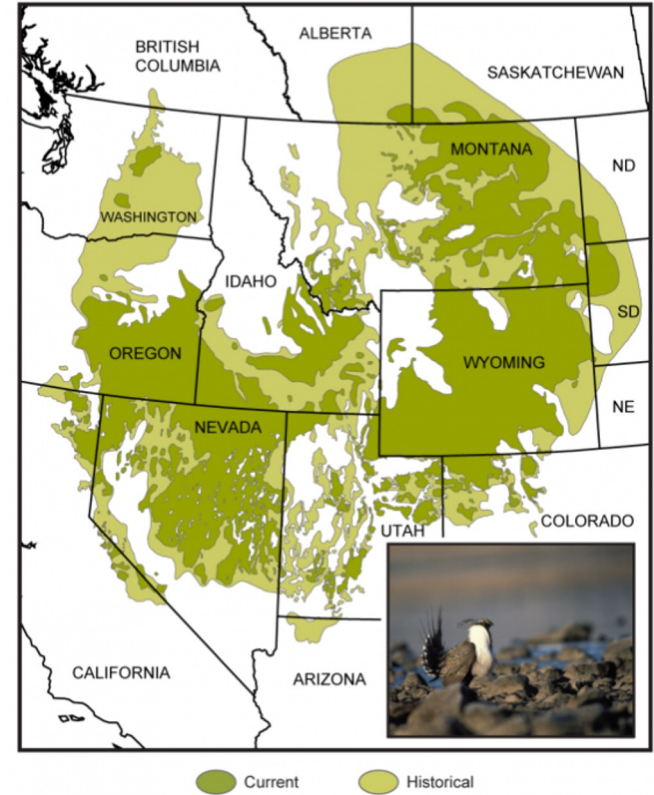


# Why does AIM matter?

- The greater sage-grouse is endangered from habitat loss
- AIM helps monitor lands for changes in ecosystem
- Greater sage-grouse inhabit much of the American west



Historical and Current Range of Sage Grouse Habitat



# Monarch Butterfly Project



- Worked with IDFG
- Monitored patches of milkweed for monarch butterfly activity
- Returned to the same patch about three weeks later to survey progression in monarch life cycle
- Got to look at butterflies and larvae for the day!





# Miscellaneous projects!

- I went out for two days with IDFG to electrofish and check for fishery health!
  - Almost got attacked by a moose...
- Maintained recreation sites with BLM ranger Todd
- Timber cruising with BLM!
- Trail surveying



# What did I learn?

- Working with the government can be really cool, but also has its drawbacks
- Small town life is awesome!
- There is so much public land in the American west
- Conservation work can take you to the most interesting places!
- Community-based approaches to conservation seem to be effective



Rafting to work!



Questions?





# Image Sources

- [https://commons.wikimedia.org/wiki/File:Salmon ID - aerial.jpg](https://commons.wikimedia.org/wiki/File:Salmon_ID_-_aerial.jpg)
- <https://www.blm.gov/documents/idaho/public-room/map/blm-idaho-field-and-district-administrative-boundaries>
- <https://www.globalchange.gov/browse/multimedia/historical-and-current-range-sage-grouse-habitat>
- <https://usfwspacific.tumblr.com/post/166360154360/pollinator-preservation-project-at-the>
- <https://earthjustice.org/features/greater-sage-grouse-sage-against-the-machine>
- <https://www.facebook.com/salmonvalleystewardship/>
- Beautiful photos thanks to Sara Morelli, Wildlife Biologist at BLM-SFO.