

# Reed Canyon Squirrels and Foraging Behavior



Ashlee Cook

Reed College Bio342

## Background

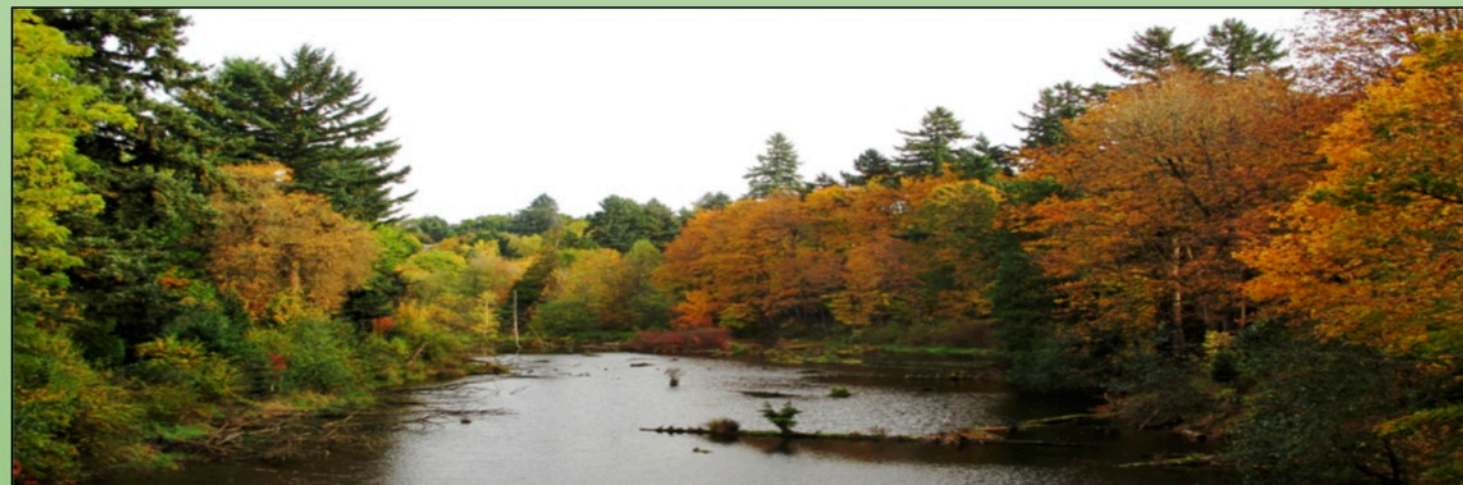
- Two dominant squirrel species in Portland, Oregon: Eastern gray squirrel (*Sciurus carolinensis*) and Eastern fox squirrel (*Sciurus niger*).
- In the colder months, squirrels exhibit what is known as “caching” behavior which is the collection and burial of food such as nuts (4).
- **Is there a difference between the foraging activity of eastern gray and fox squirrels in the Reed Canyon?**



Eastern Fox squirrel (2)



Eastern Gray squirrel (1)

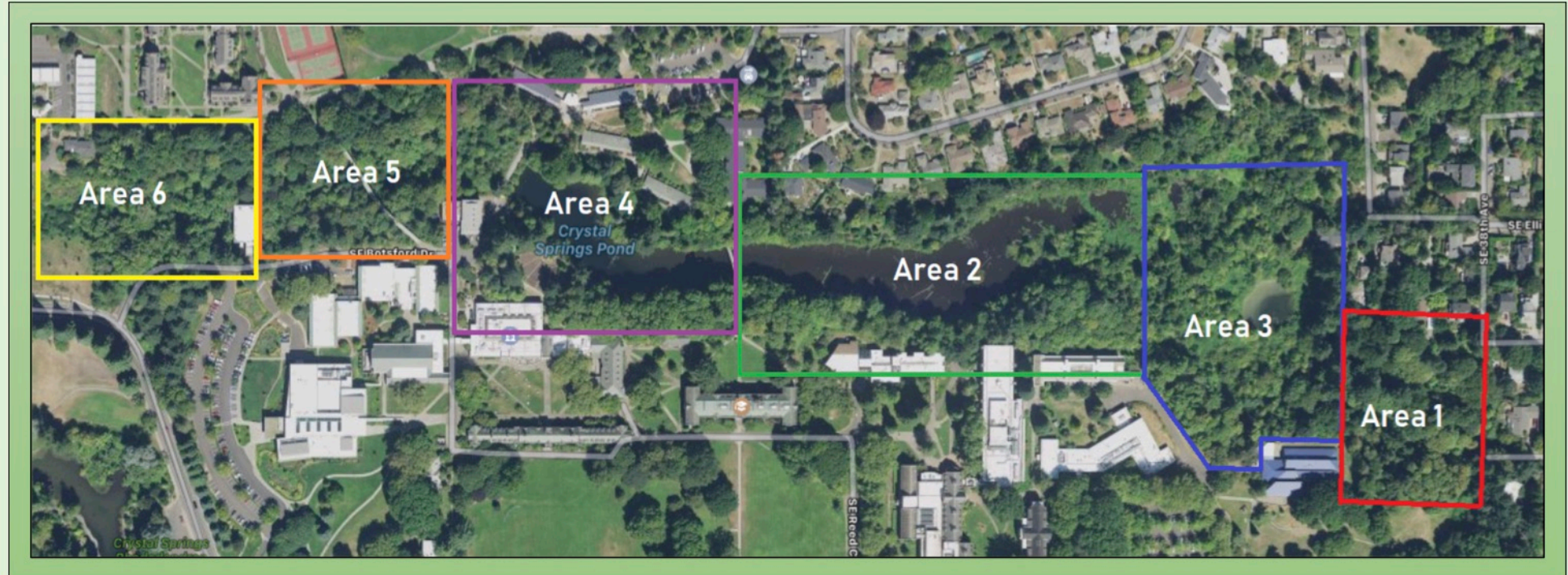


Reed College Canyon (3)



# Results

- Area 2 and 4 had the least amount of activity of behaviors.
- Gray squirrels had more foraging activity than Fox squirrels on average.
- On average, gray squirrels had the most eating (3.17 instances) and climbing (2.67 instances) activity.
- Fox squirrels had the fewest digging activity (0 instances) on average.



Labelled Satellite Image of the Reed College Canyon (5)

## Foraging Activity of Eastern Gray and Fox Squirrels in the Reed Canyon



## Conclusion and Future Directions

- **While there was a trend in activity and area, there was no significant impact of location and foraging activity.**
- **Gray squirrels were observed more in foraging behaviors than fox squirrels, on average.**

### What's Next?

- **Squirrels were observed doing foraging behaviors on both the ground and trees, and future research could look to see which has the greatest amount of activity.**
- **Comparison between eastern gray and fox squirrels from urban and rural college campuses.**

### References:

- (1) <https://kids.nationalgeographic.com/animals/eastern-gray-squirrel/#eastern-gray-squirrel-tree.jpg>
- (2) <http://wildlife.ohiodnr.gov/species-and-habitats/species-guide-index/mammals/fox-squirrel>
- (3) [https://blogs.reed.edu/reed\\_canyon/page/4/](https://blogs.reed.edu/reed_canyon/page/4/)
- (4) <https://ssec.si.edu/stemvisions-blog/why-do-squirrels-bury-nuts-and-other-mysteries>
- (5) <https://satellites.pro/#45.482992,-122.634308,17>

### Acknowledgements:

I want to thank Suzy Renn for her help in troubleshooting for the observations and the Biology Stockroom for providing me with the necessary equipment to observe the squirrels. I also want to thank Maya Jensen for her support and encouragement. With the help of all, this project was able to occur.