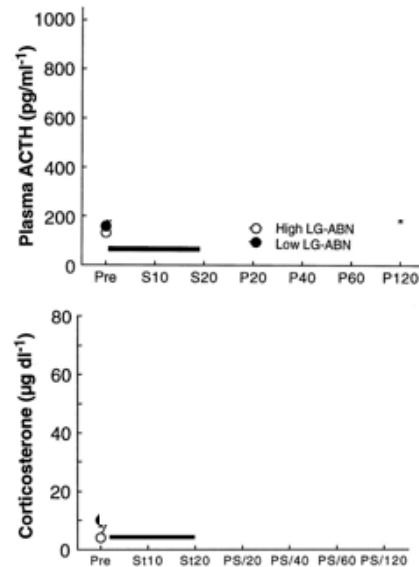
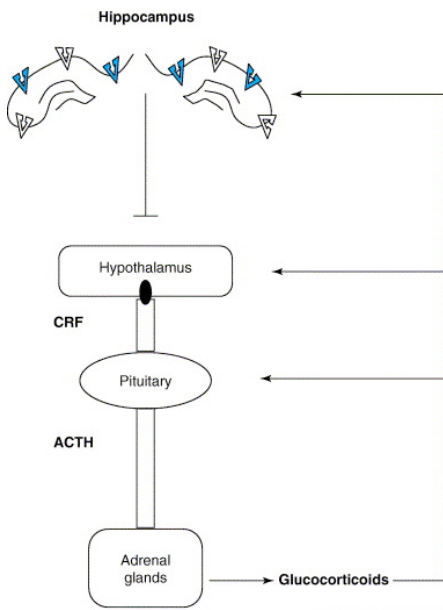
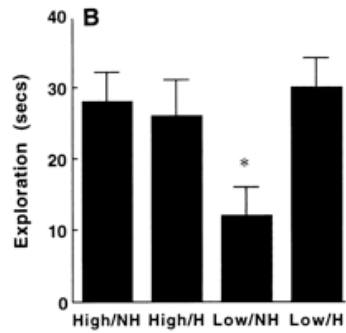
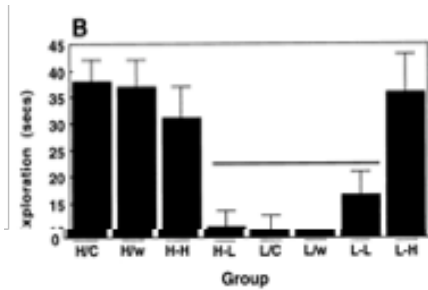
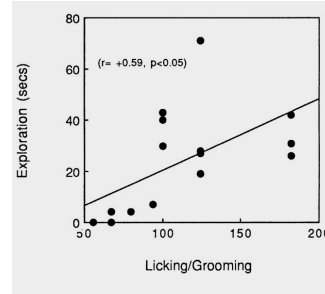
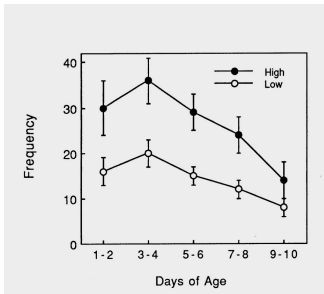
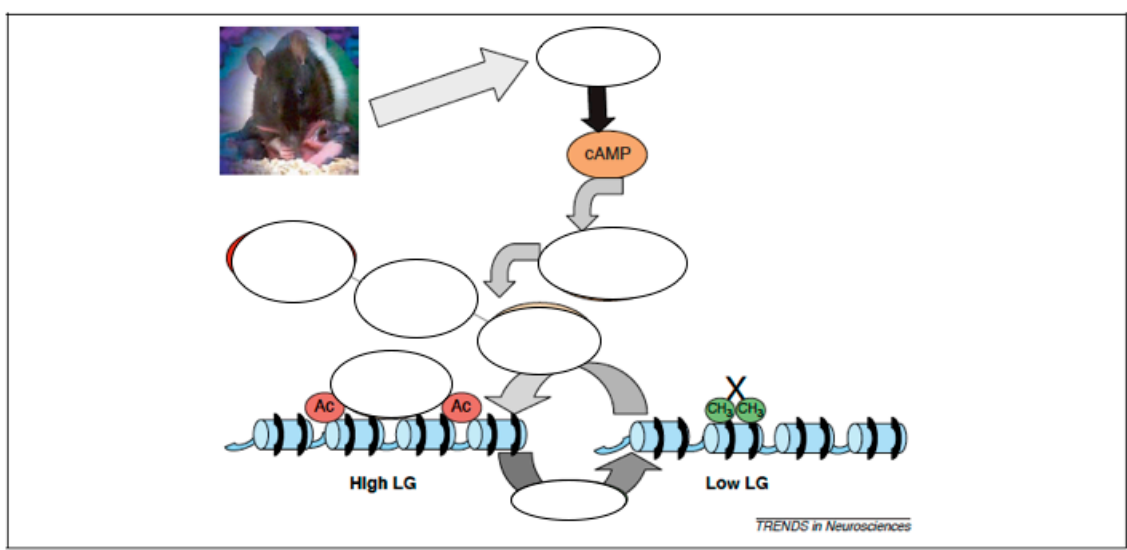
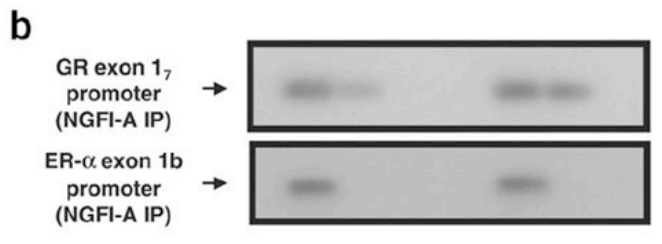
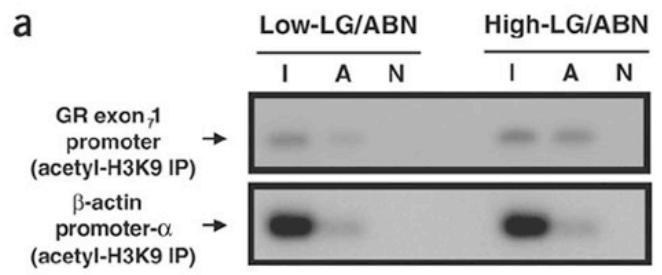
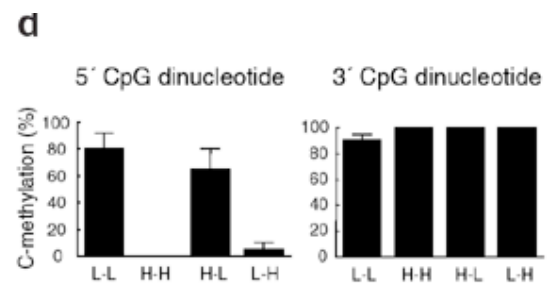
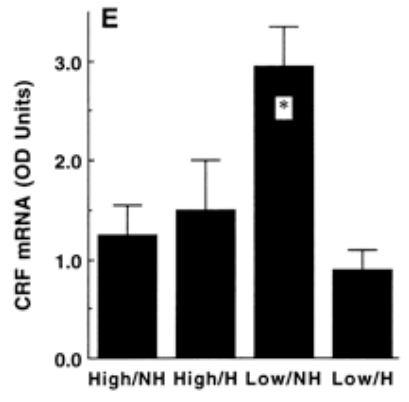
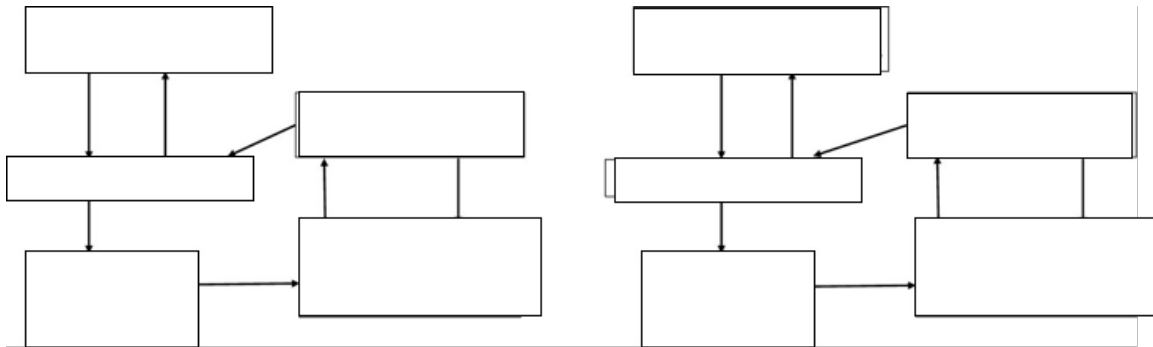


HELPFUL FIGURES & NOTES:

(All PowerPoint files will be available on the courses server after lecture. The subset of figures and notes here are meant to assist your note taking or studying.)







VOCABULARY:

(Practice writing interesting, informative sentences that include, and capture the meaning of, 4-5 words from this list. To simply memorize a definition, is not sufficient.)

heritability  
DNA methylation  
Chromatin  
Transgenerational  
Epigenetic

Epigenome  
Histone  
Variation  
phenotype

PRACTICE EXAM QUESTIONS:

1. Write 4 hypotheses using the “If [concept] then [prediction]” format that would explain the observed transgenerational inheritance of maternal care behavior studied by Michael Meaney’s lab. Make one question for each of Tinbergen’s 4 areas.
2. What does Ledon Rettig mean in her review when she uses the term “heritable epigenetic variation”?
3. Outline the steps that lead to our understanding of the epigenetic mechanisms that regulate maternal care in rats.
4. In what other organisms is adult behavior influenced by early life experiences?

READING FOR TODAY:

Weaver et al 2004 .pdf  
Meaney & Szyf (review of above) .pdf  
Solomon-lane et al 2018 .pdf  
Ledon-Retig et al 2012 .pdf

READING FOR THURSDAY

McKay & Anholt (skim but pay attention to GXE figure) .pdf  
Rittschoff & Houke 2018 .pdf  
Casasa & Moczek 2018 .pdf  
Fraser et al 2014 .pdf