

Genes

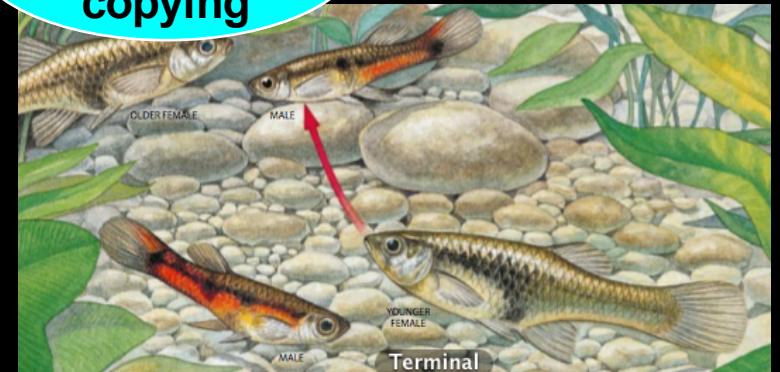
Environment

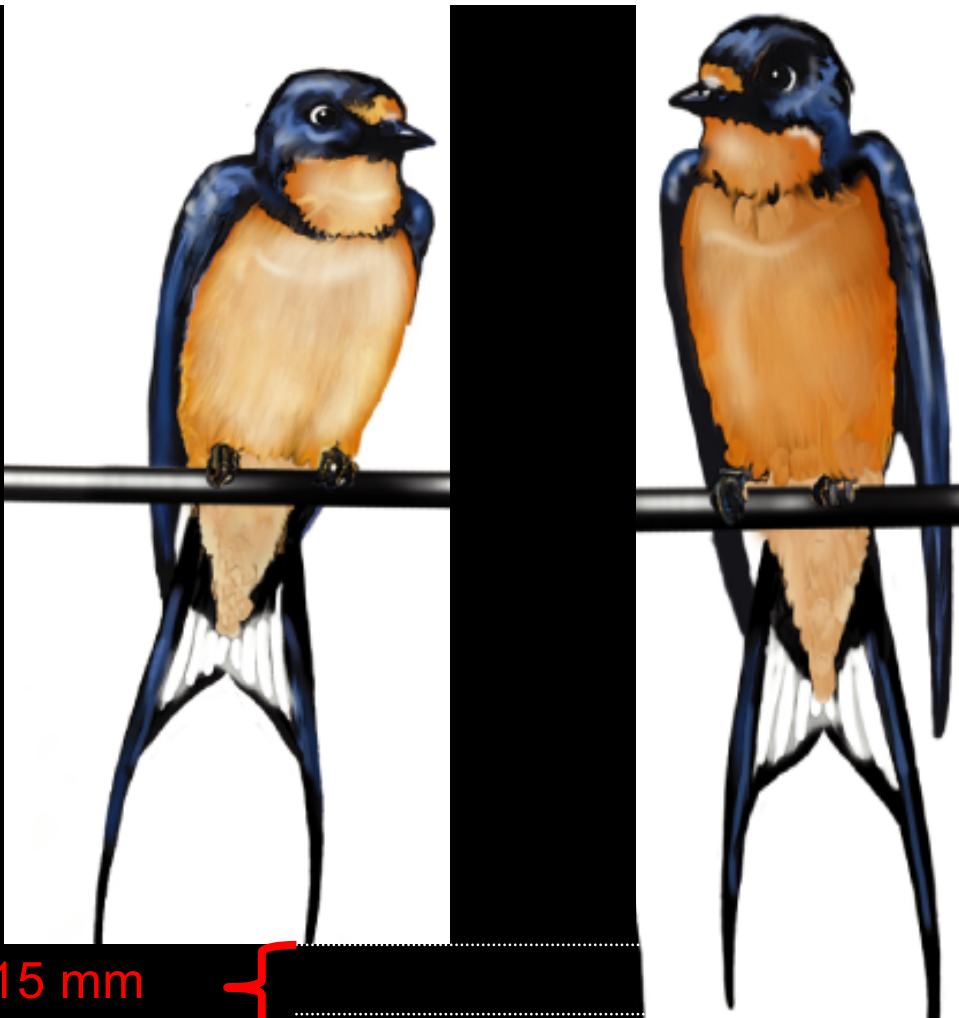


Sexual Imprinting

Cultural Models of Mate Choice

Mate choice copying





15 mm



3a) Female barn swallows prefer male Barn Swallow with longer tails even though these males do not fly as well as males with slightly shorter tail feathers.

3b) Male barn swallows with longer tails tend to have fewer internal parasites.

3c) Male barn swallows with longer tails tend to catch more insect prey items that are fed to their offspring.

3d) Female swallows of another species prefer males with long tails even though the males in that species do not have long tail feathers.

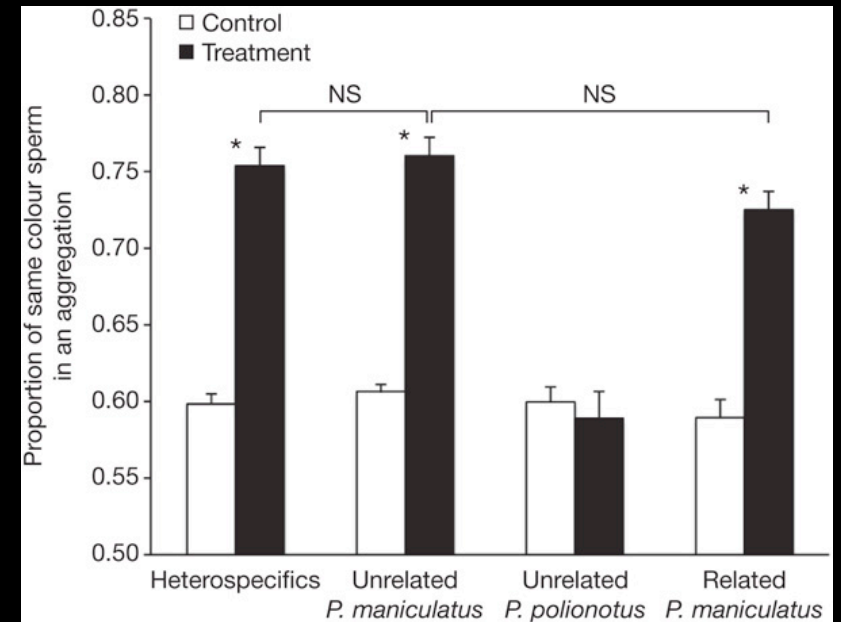
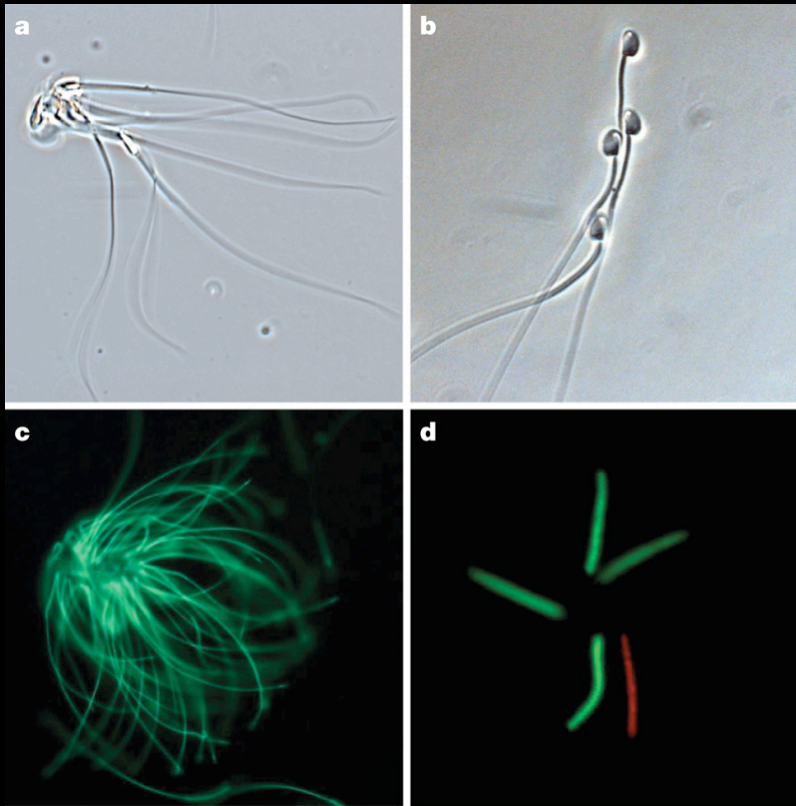
3e) Although female swallows generally prefer males with long tail feathers, if a young female observes an older female mating with a male with short tail feathers, the young female is likely to mate with this same male.

Don't write here

Postcopulatory choice



Don't write here



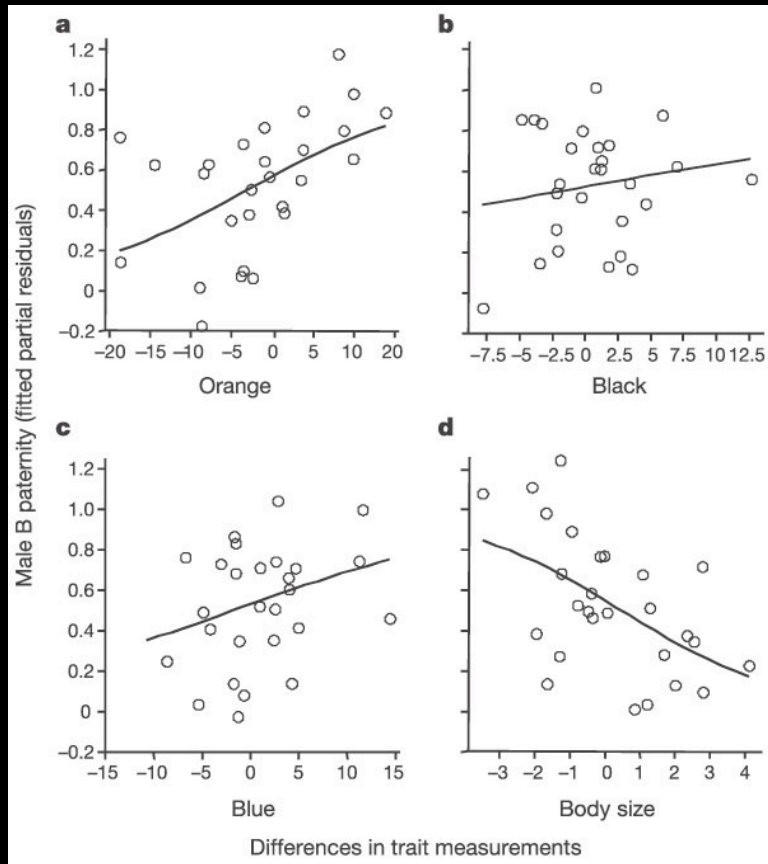
Postcopulatory competition

Nature **463**, 801-803 (11 February 2010) | doi:10.1038/nature08736; Received 24 September 2009; Accepted 7 December 2009; Published online 20 January 2010

Competition drives cooperation among closely related sperm of deer mice

Heidi S. Fisher^{1,2} & Hopi E. Hoekstra^{1,2}

Postcopulatory choice

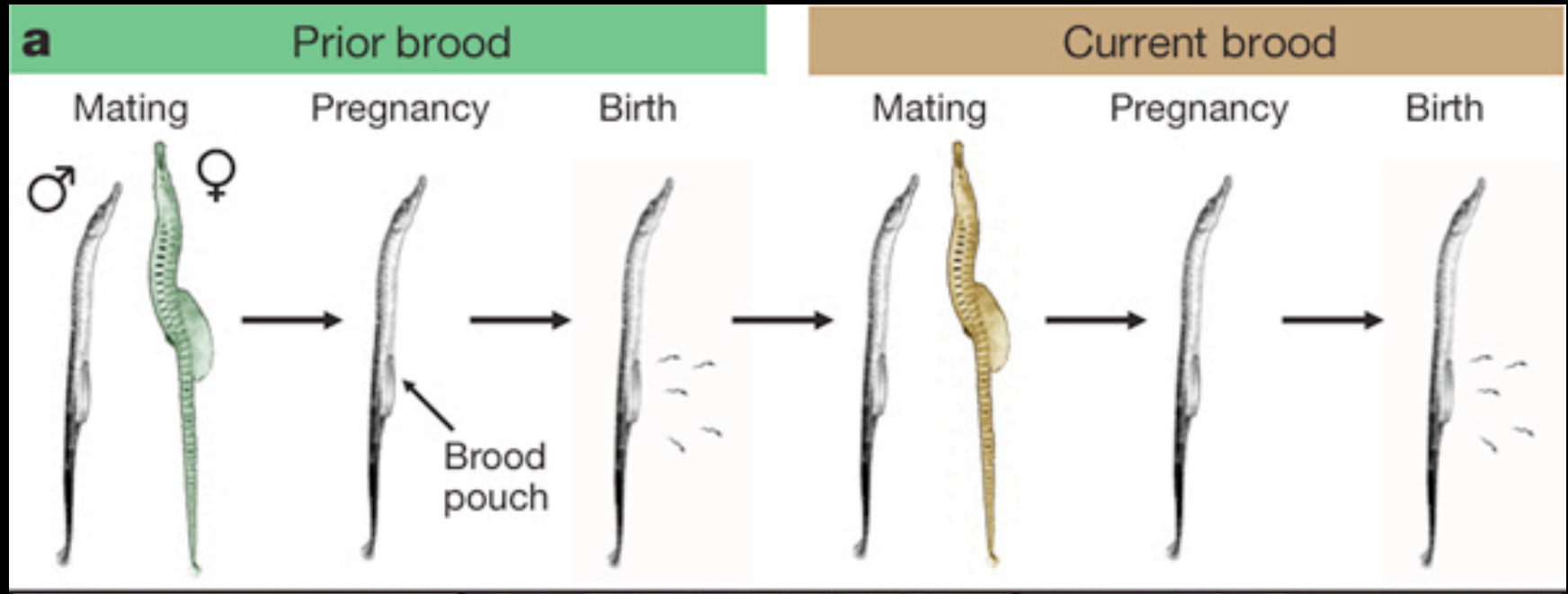


Directional postcopulatory sexual selection revealed by artificial insemination

Jonathan P. Evans, Lorenzo Zane, Samuela Francescato & Andrea Pilastro

Department of Biology, University of Padova, via U. Bassi 58/B, Padova, I-35131, Italy

Don't write here

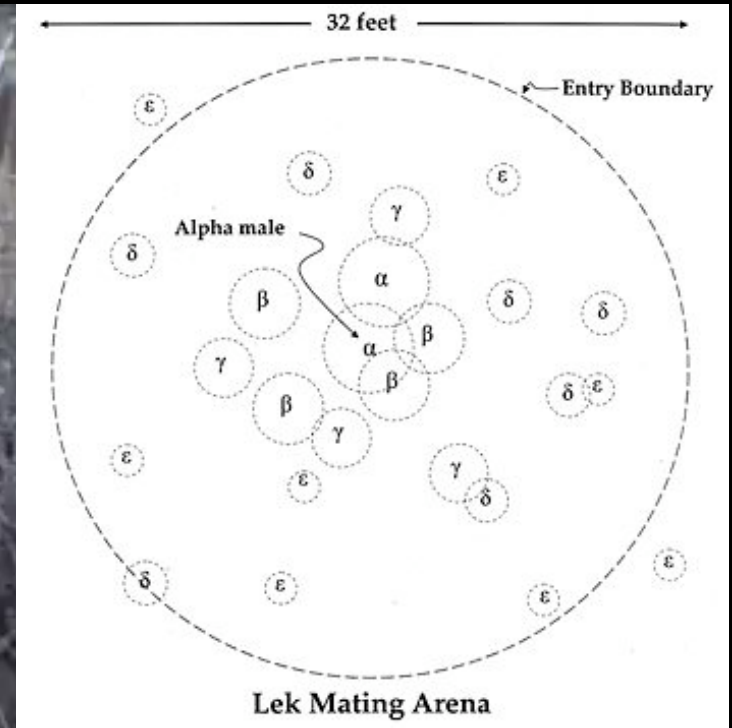


Post-copulatory sexual selection and sexual conflict in the evolution of male pregnancy

Kimberly A. Paczolt¹ & Adam G. Jones¹

Vol 464 | 18 March 2010 | doi:10.1038/nature08861

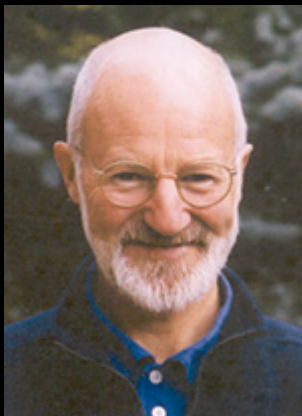
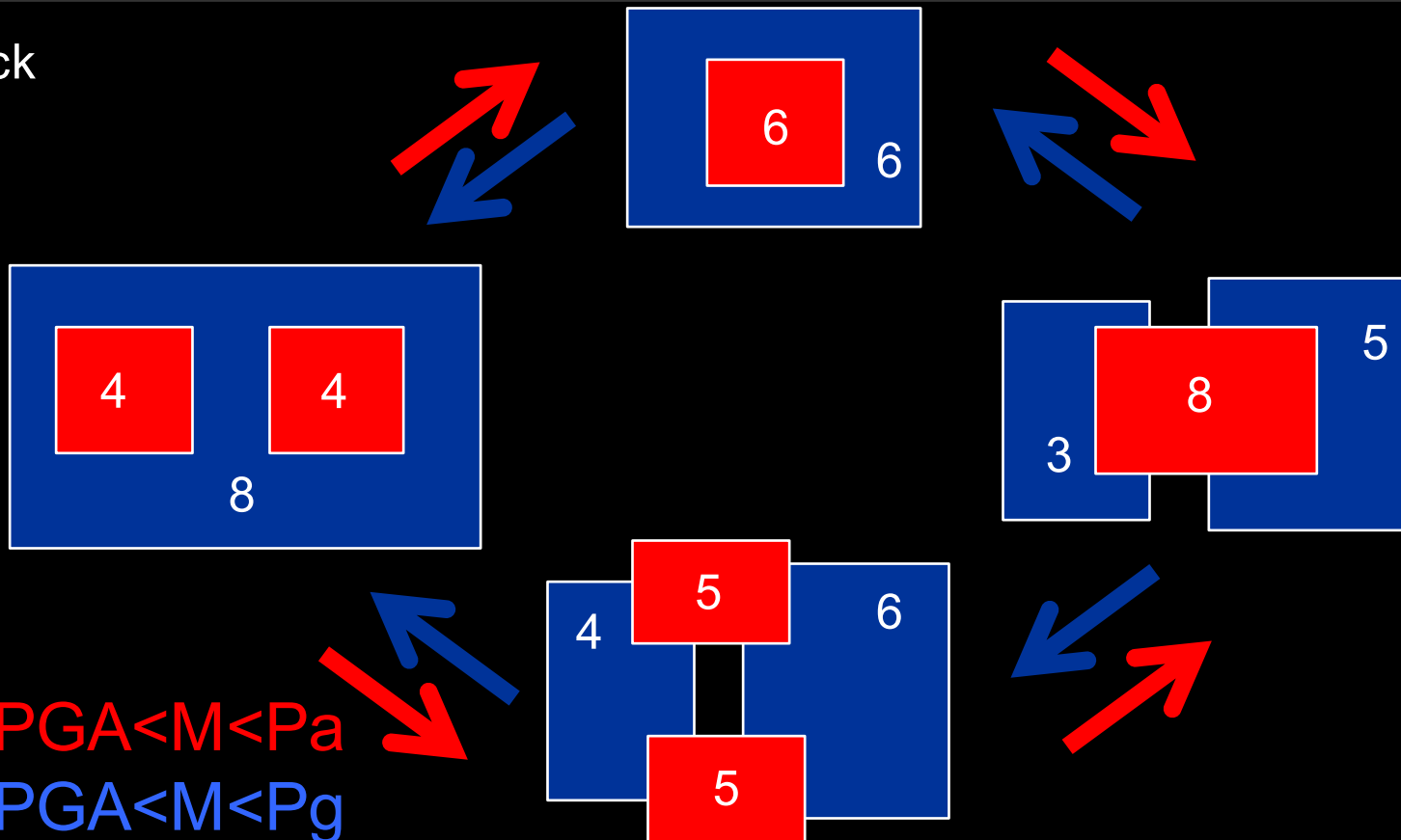




The Patricelli Lab *University of California, Davis*



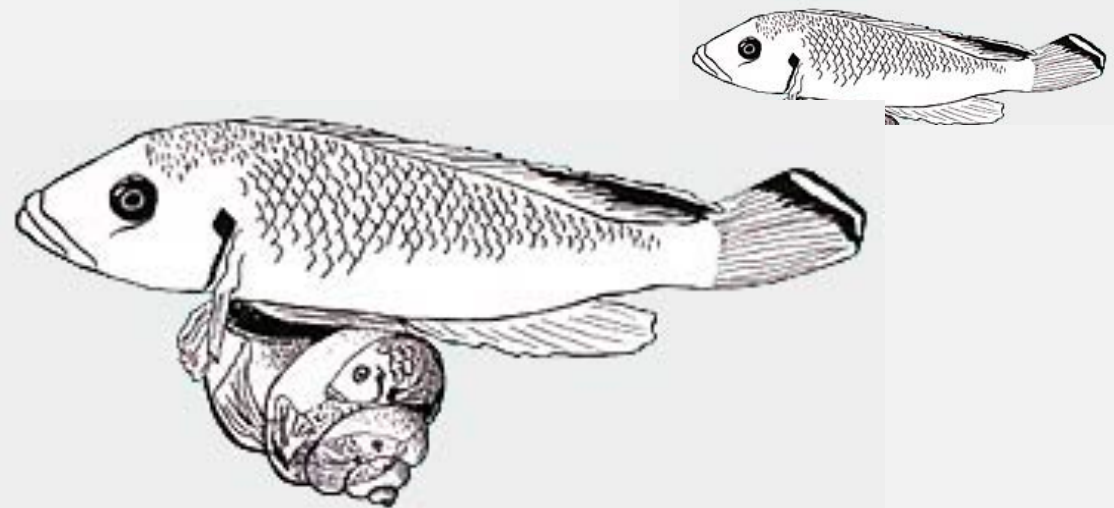
Dunnock



Nick Davies

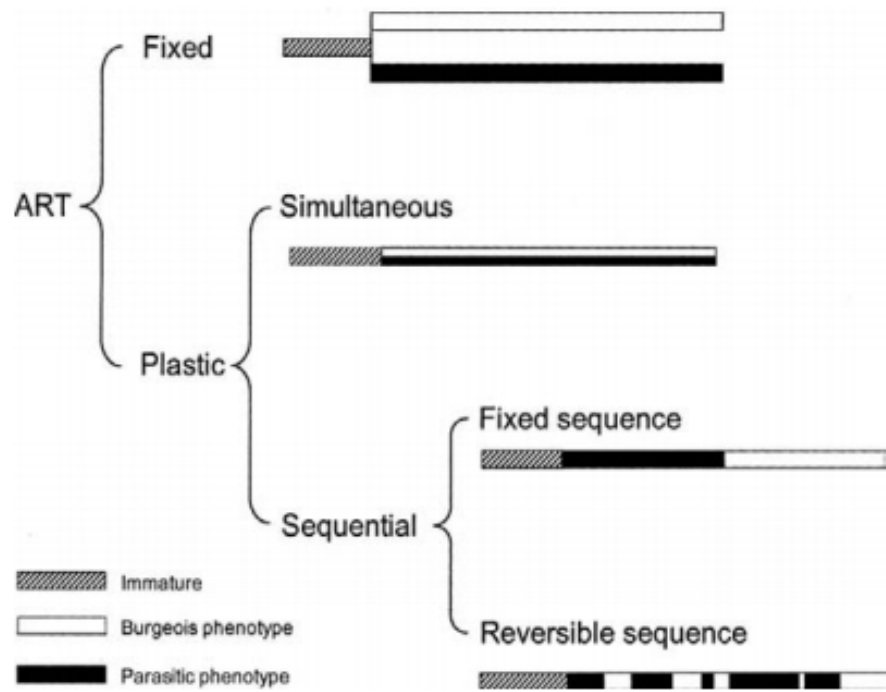


N. Callipterous Shell Dwelling Cichlid

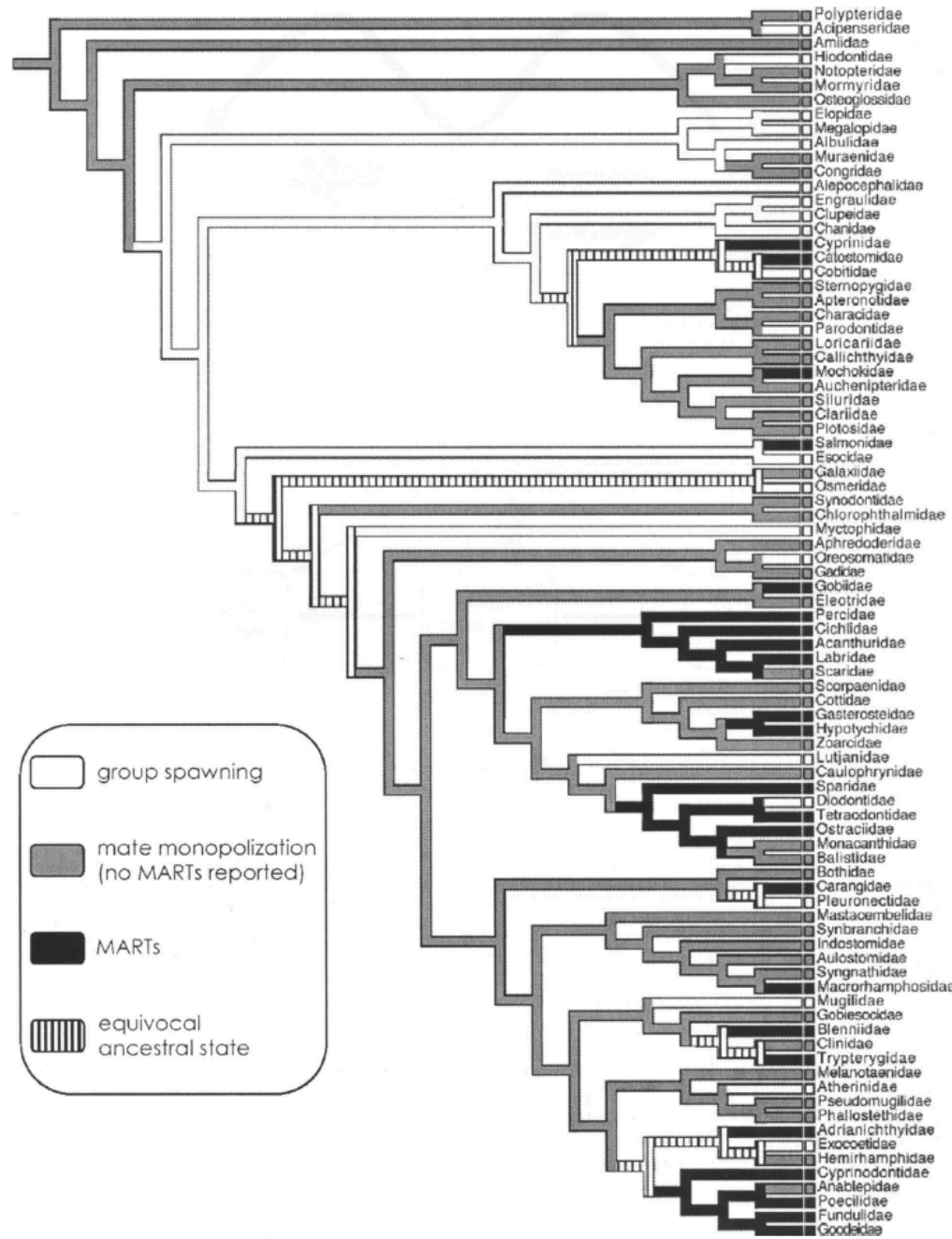


Migratory Salmon





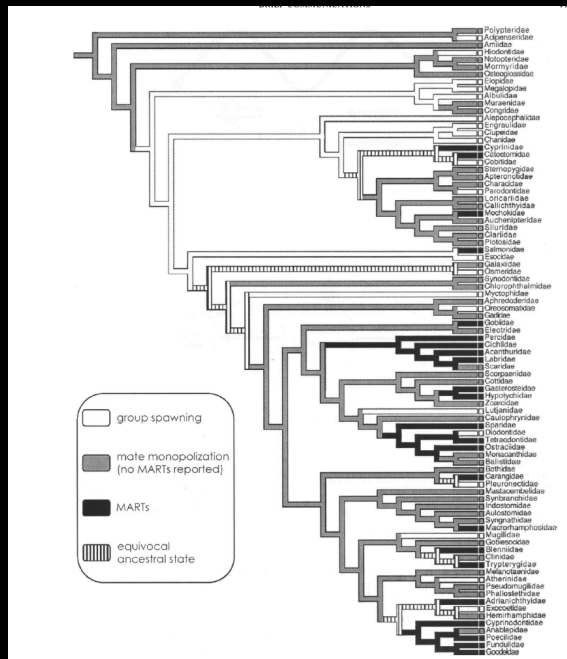
Male Alternative Reproductive Tactics



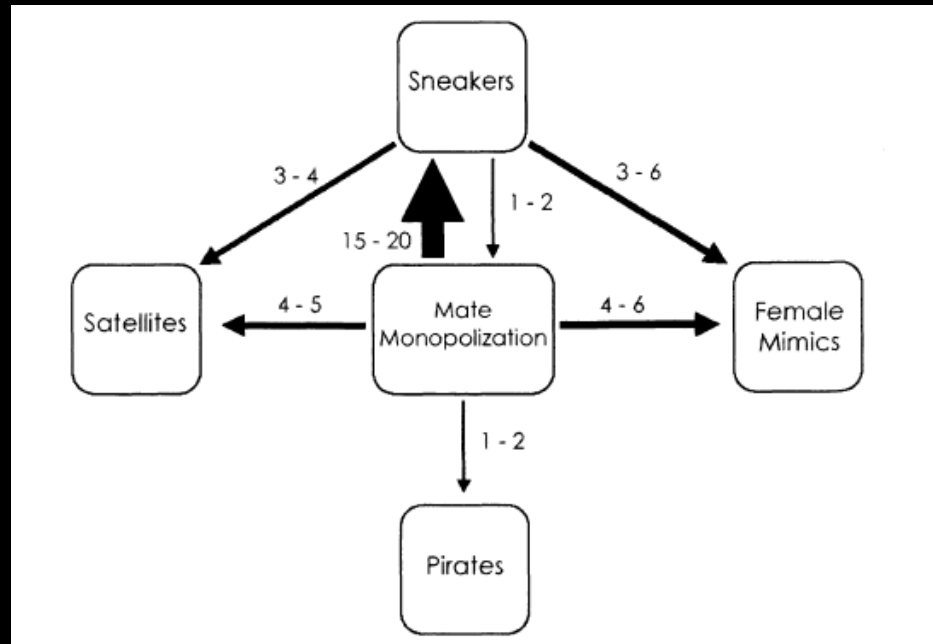
Bourgeois
 Sneaker
 Female mimic
 Pirate
 Cooperative

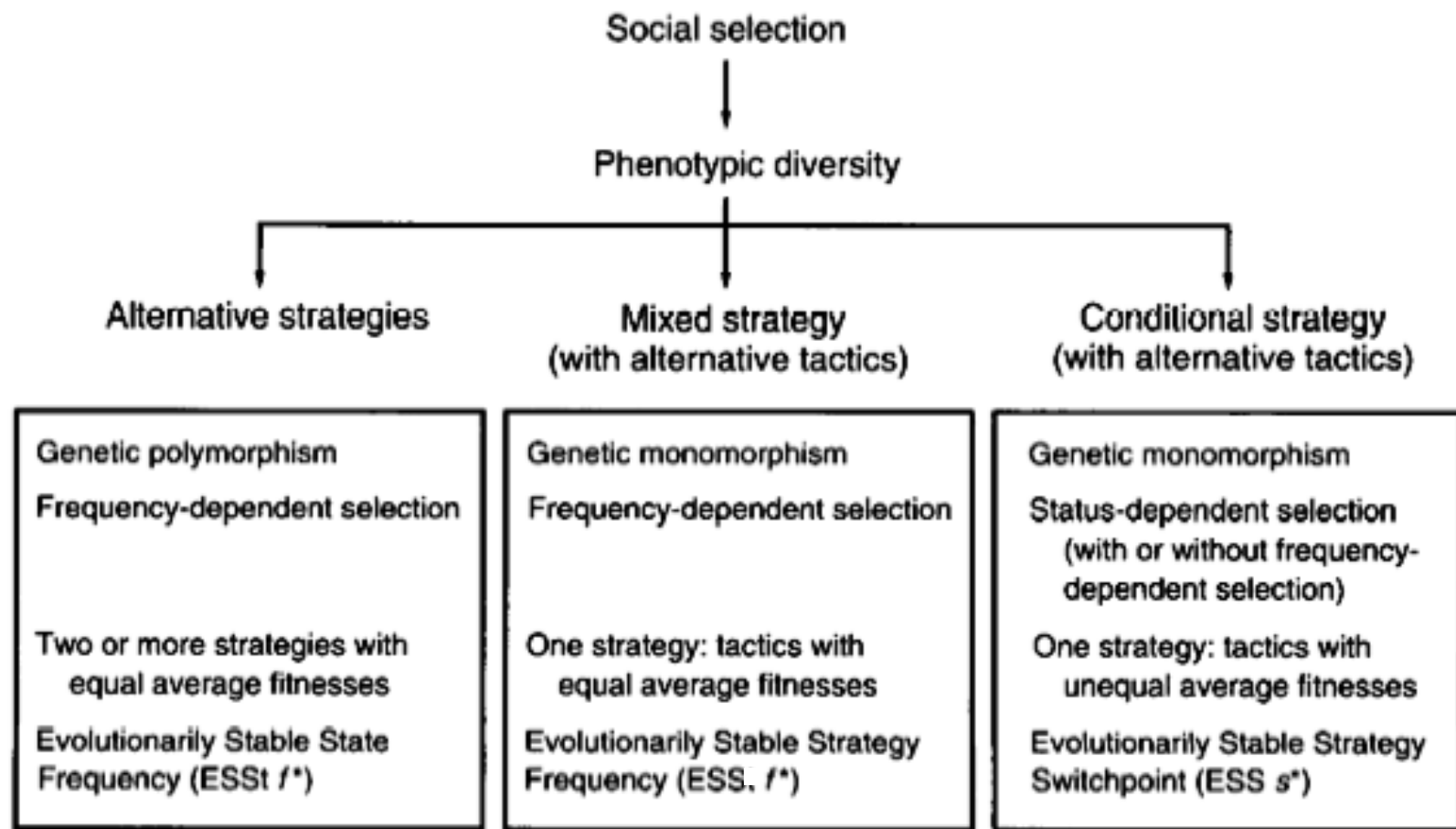
} parasitic

Male Alternative Reproductive Tactics

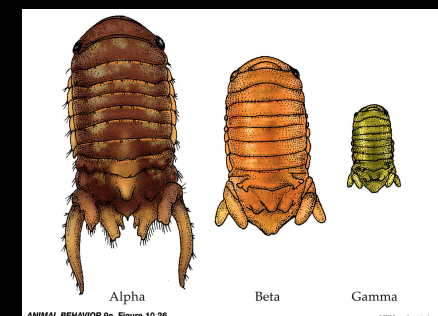
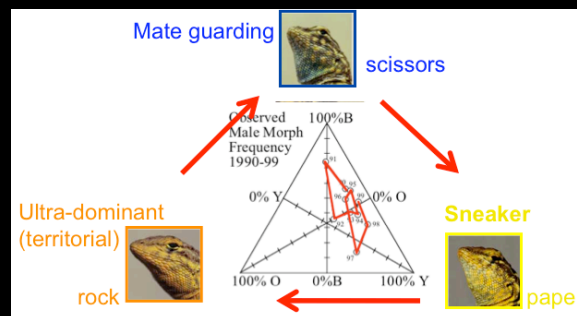
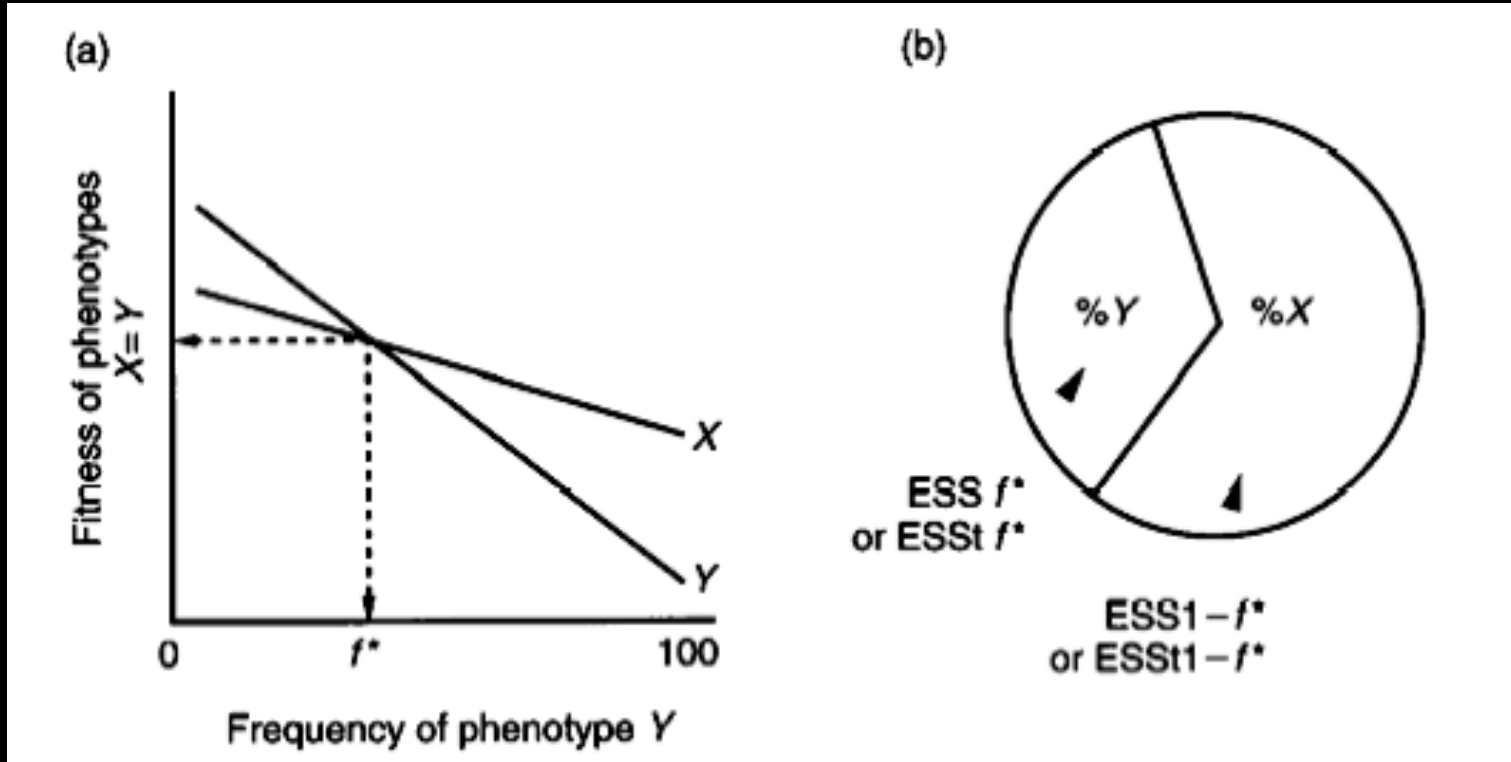


Bourgeois
 Sneaker
 Female mimic } parasitic
 Pirate
 Cooperative





(Negative) Frequency dependent selection



Mate guarding



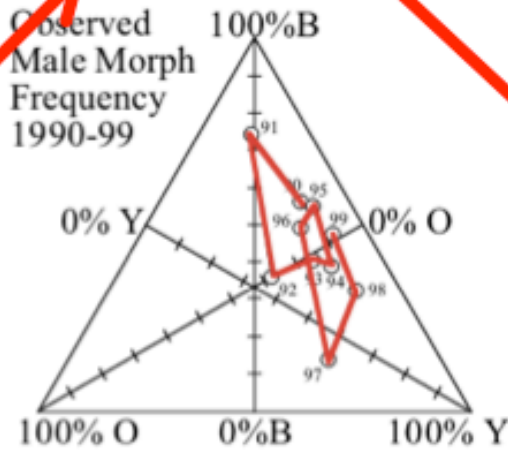
scissors

Ultra-dominant (territorial)



rock

Observed Male Morph Frequency 1990-99

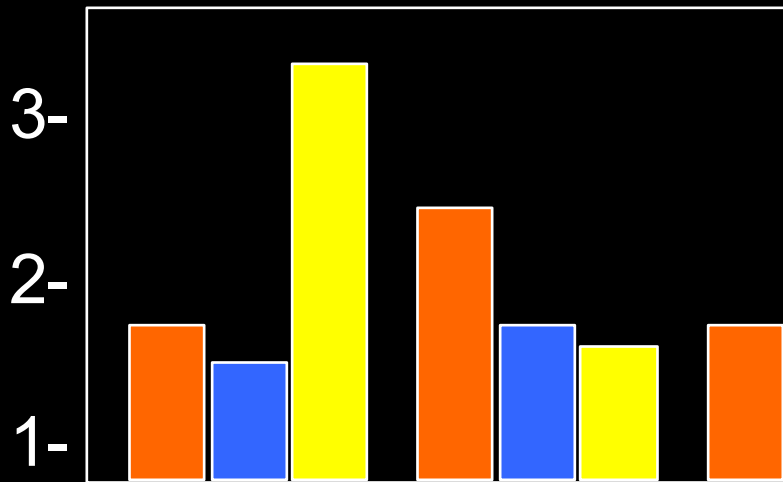


Sneaker

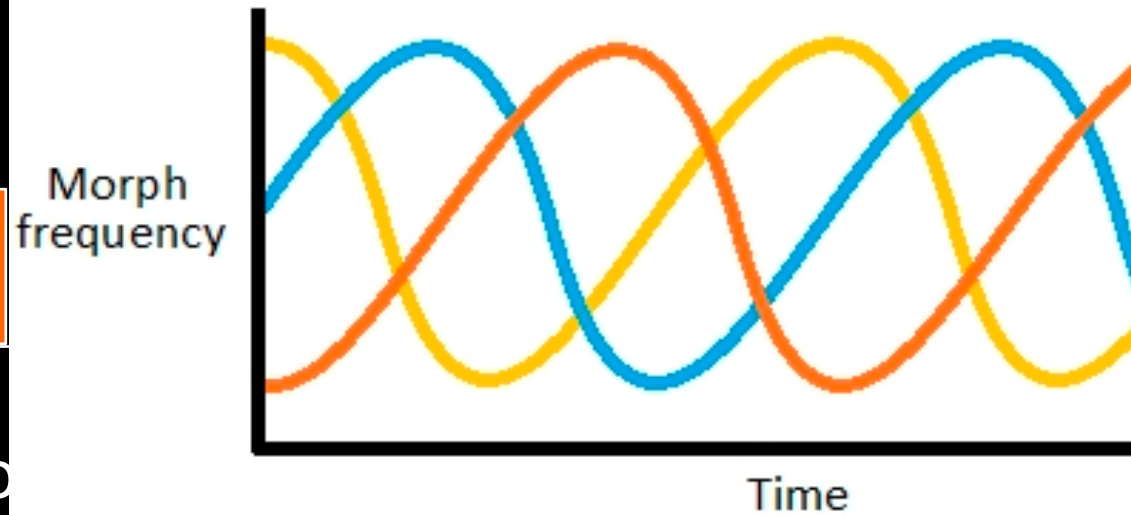


paper

Fitness of Rare Morph



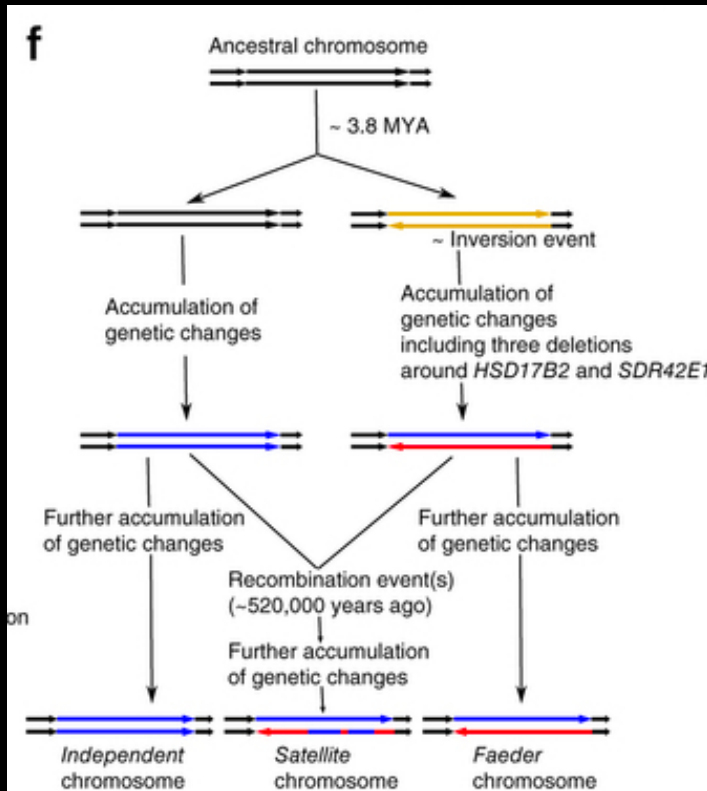
Graph of male morph frequency over time



Common Morph

Time

Ruff (*Philomachus pugnax*)



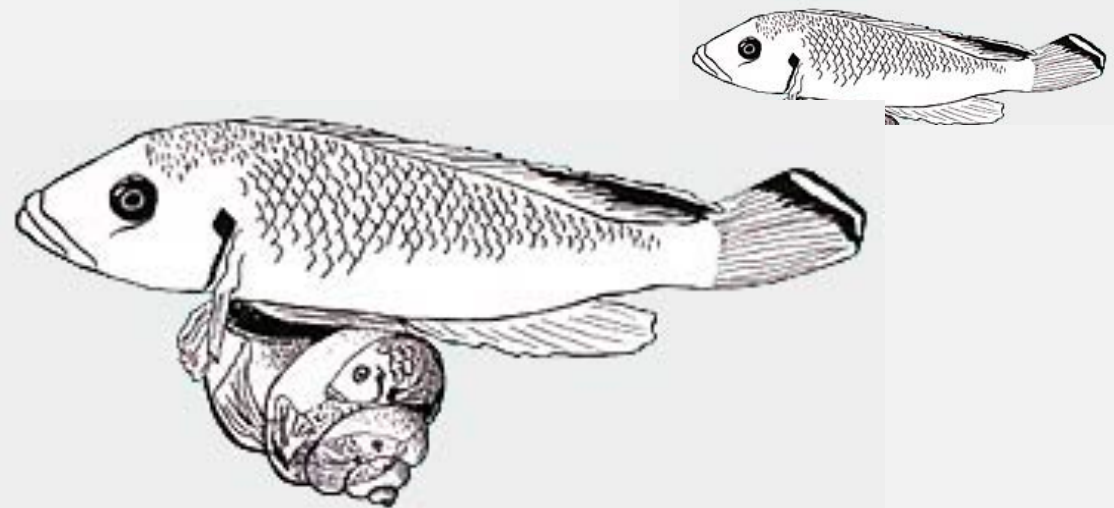
Satellite male

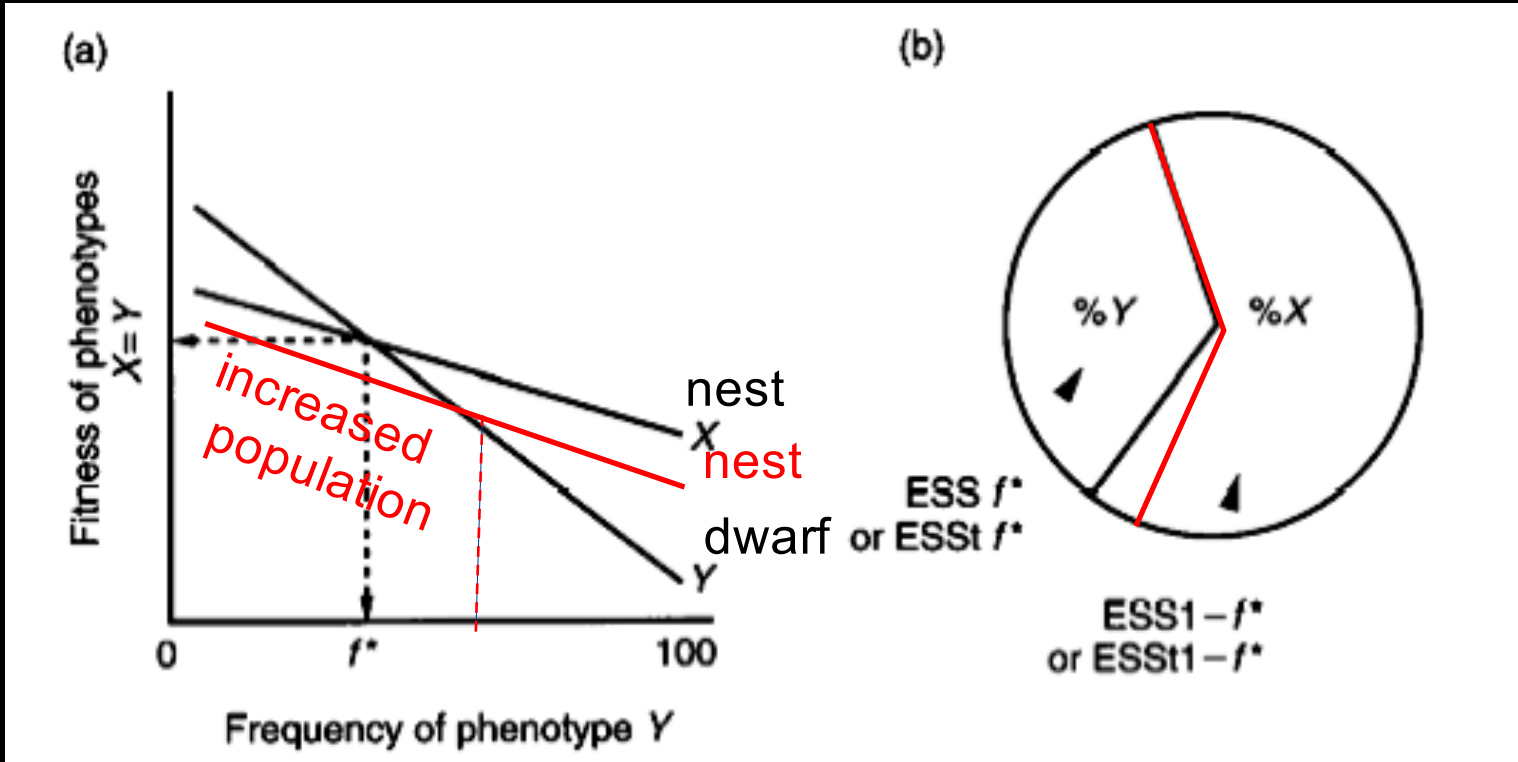


Displaying male



N. Callipterous Shell Dwelling Cichlid

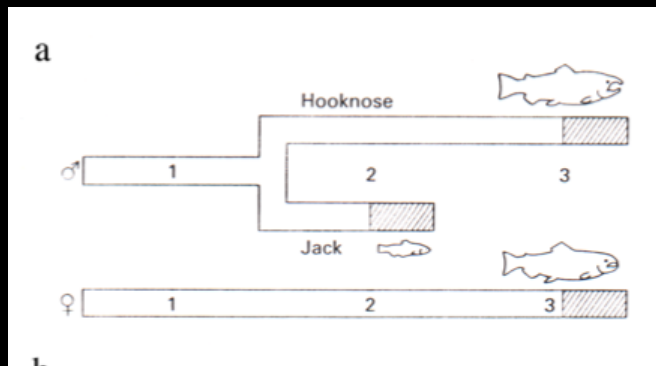
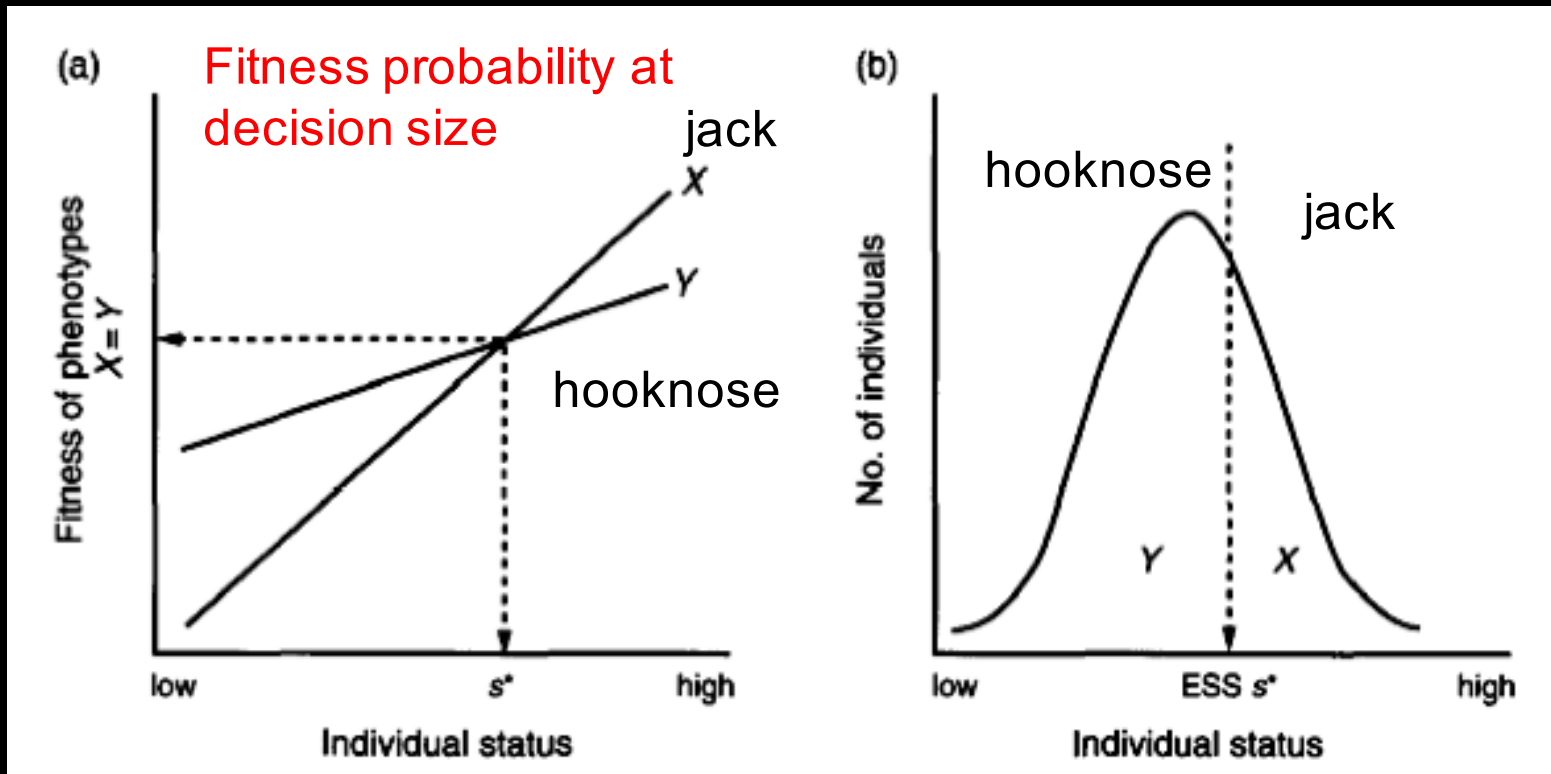


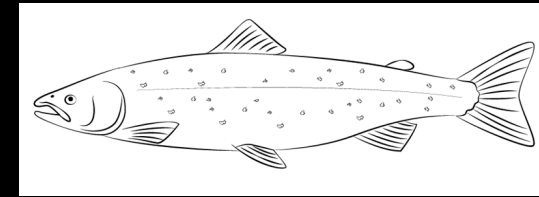
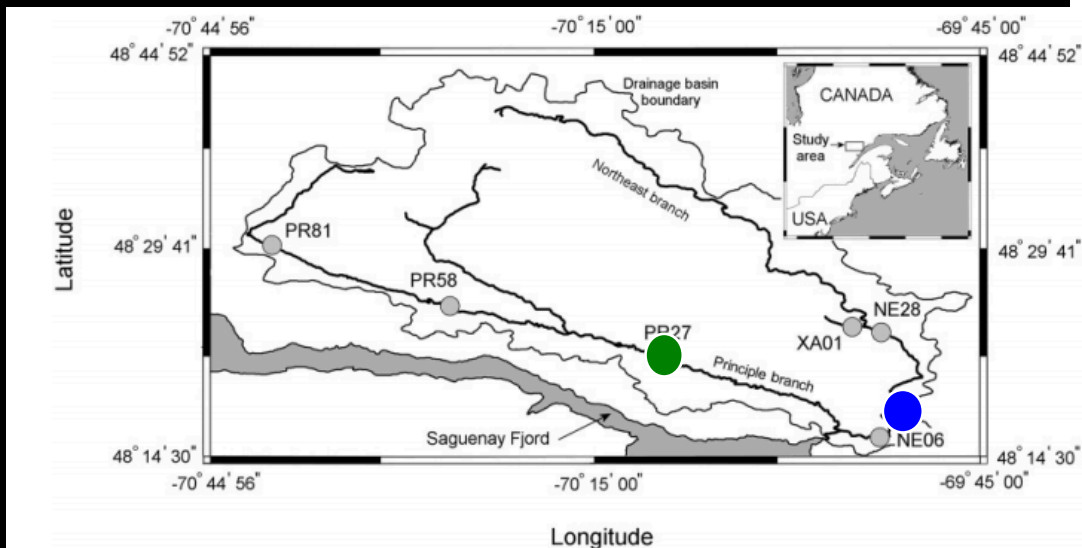
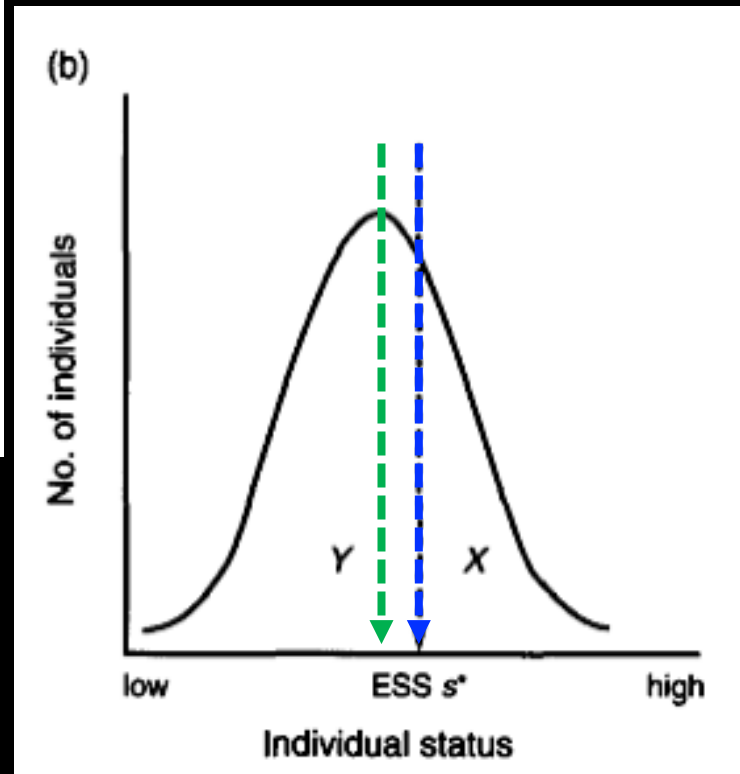
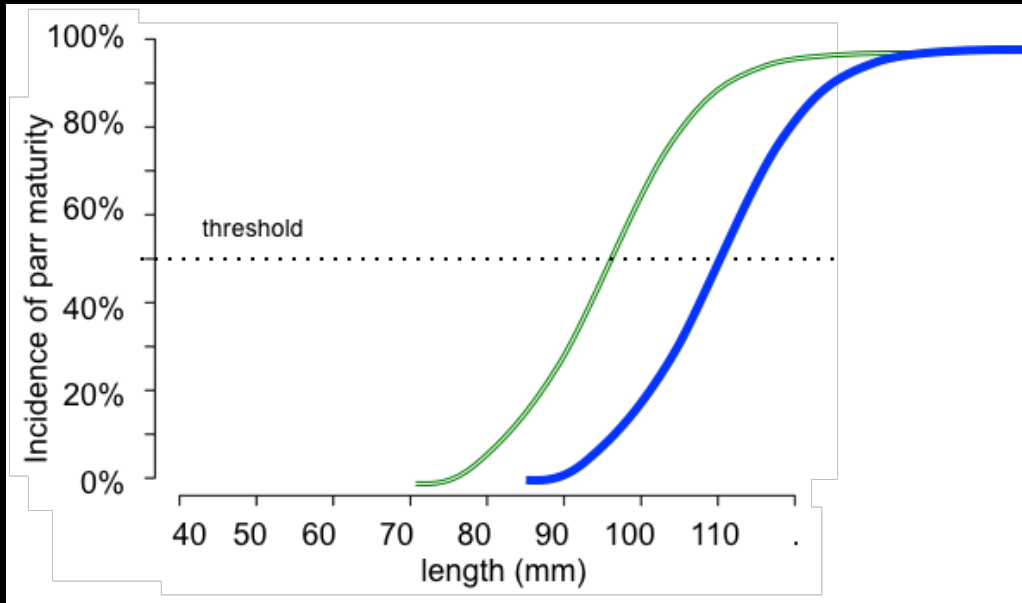


Migratory Salmon



Conditional Strategy

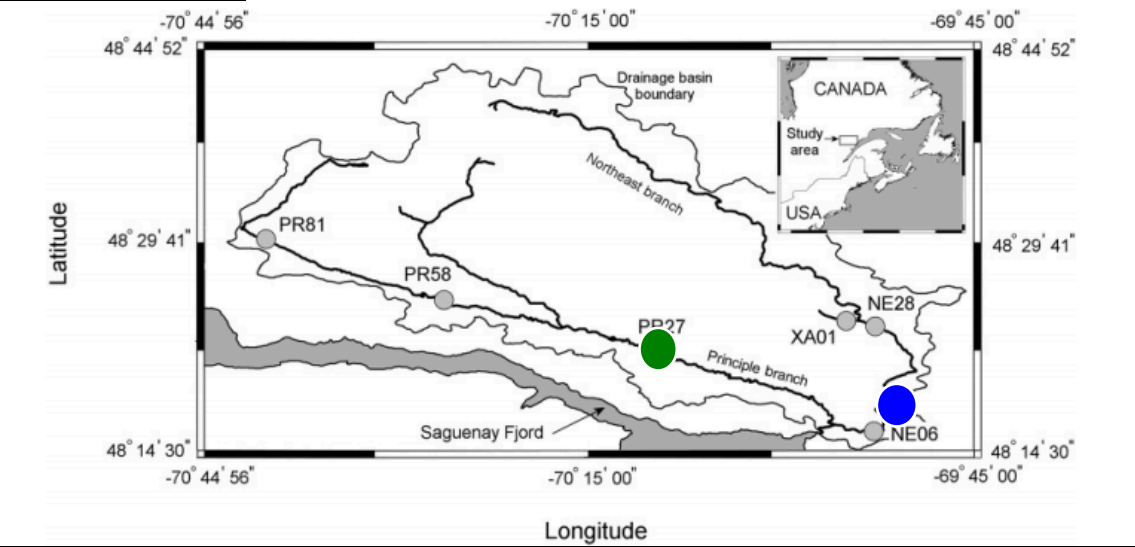
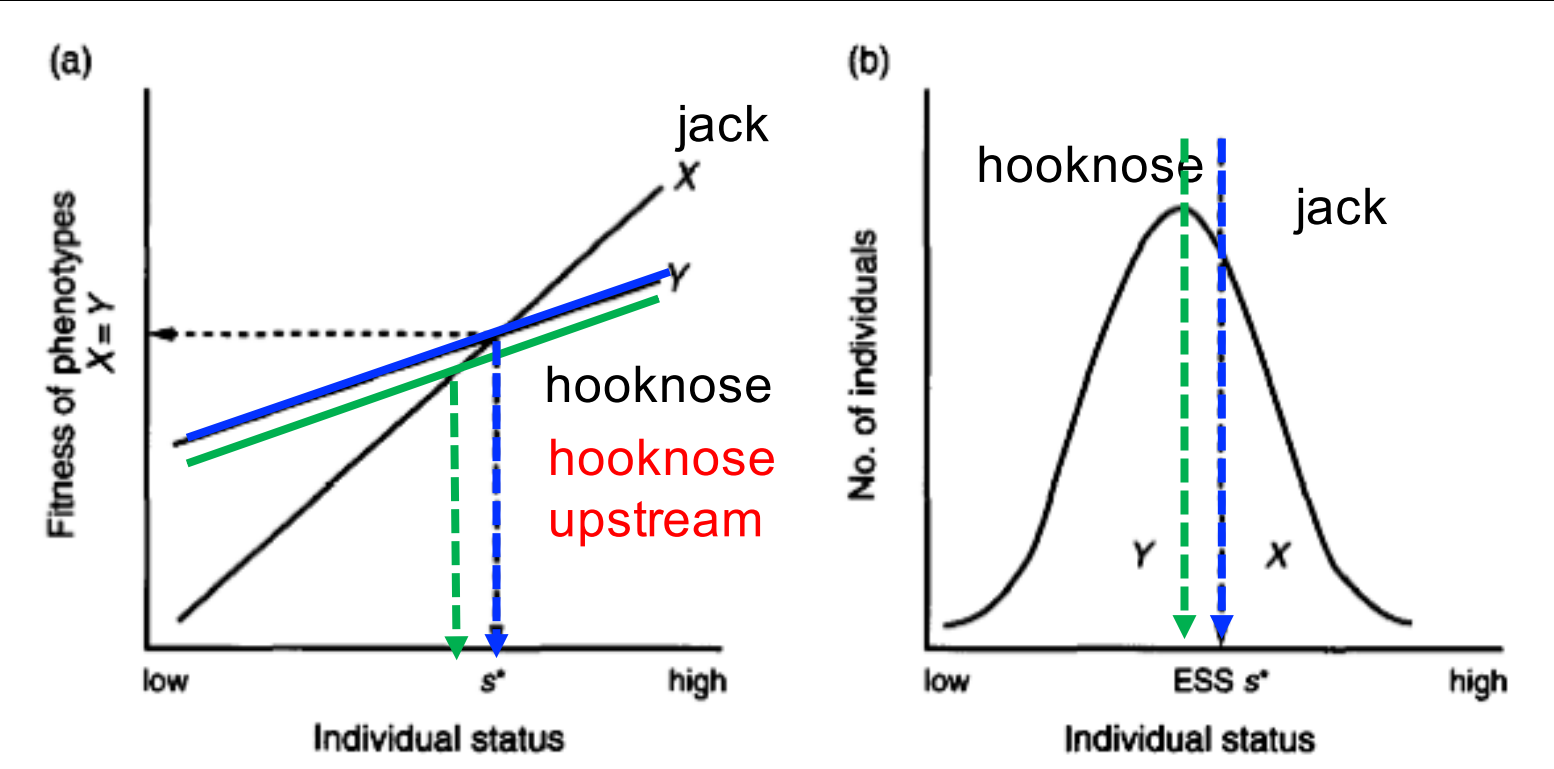


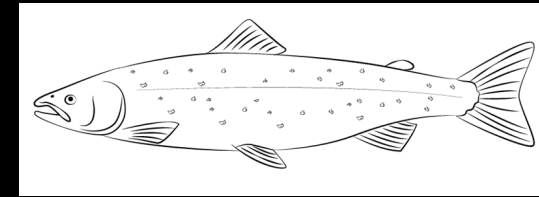
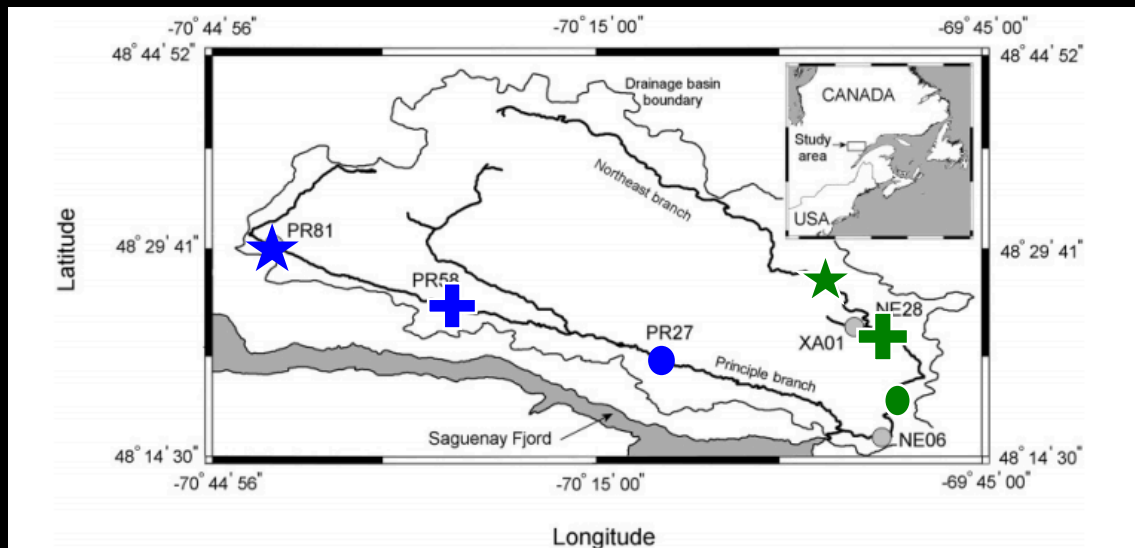
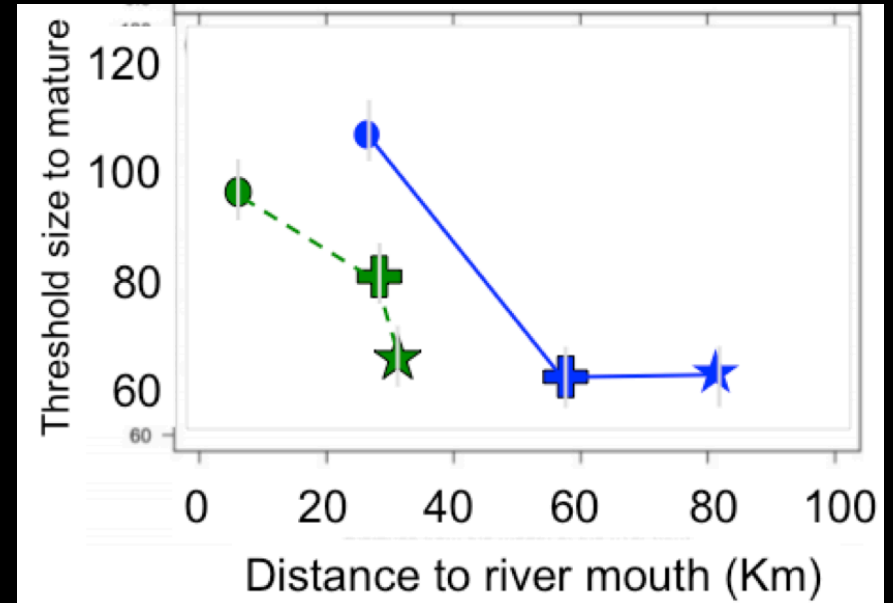
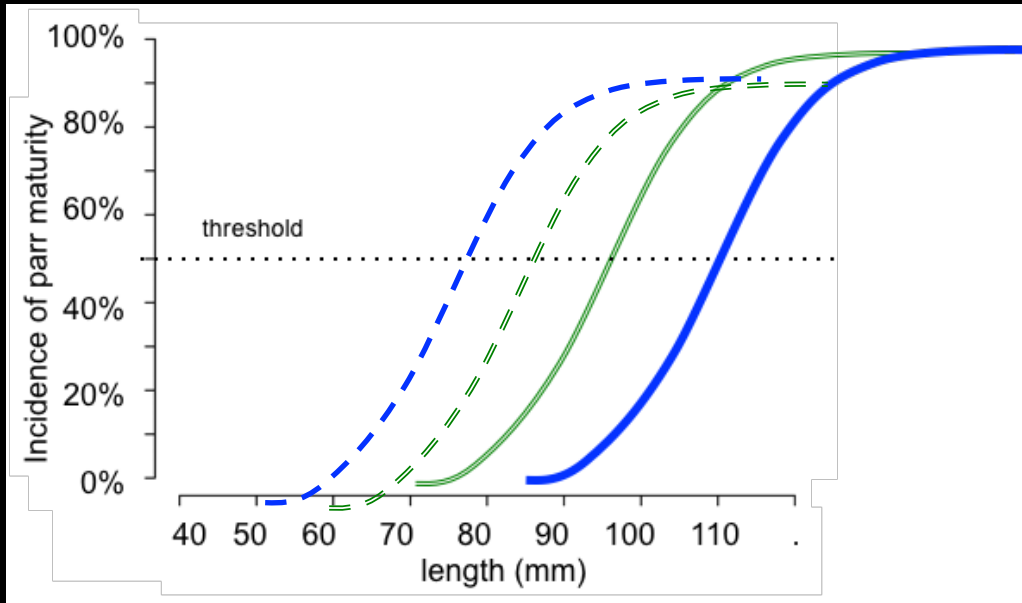


Longitudinal gradients in threshold sizes for alternative male life history tactics in a population of Atlantic salmon (*Salmo salar*)

Nadia Aubin-Horth, Jean-Francois Bourque, Gaetan Daigle, Richard Hedger, and Julian J. Dodson

Conditional Strategy





Longitudinal gradients in threshold sizes for alternative male life history tactics in a population of Atlantic salmon (*Salmo salar*)

Nadia Aubin-Horth, Jean-Francois Bourque, Gaetan Daigle, Richard Hedger, and Julian J. Dodson

Conditional Strategy

