

Forms of Influence

Grayson Perry

&

Rapid Interpretation

Olivia Dao

Grayson Perry







Rapid Interpretation





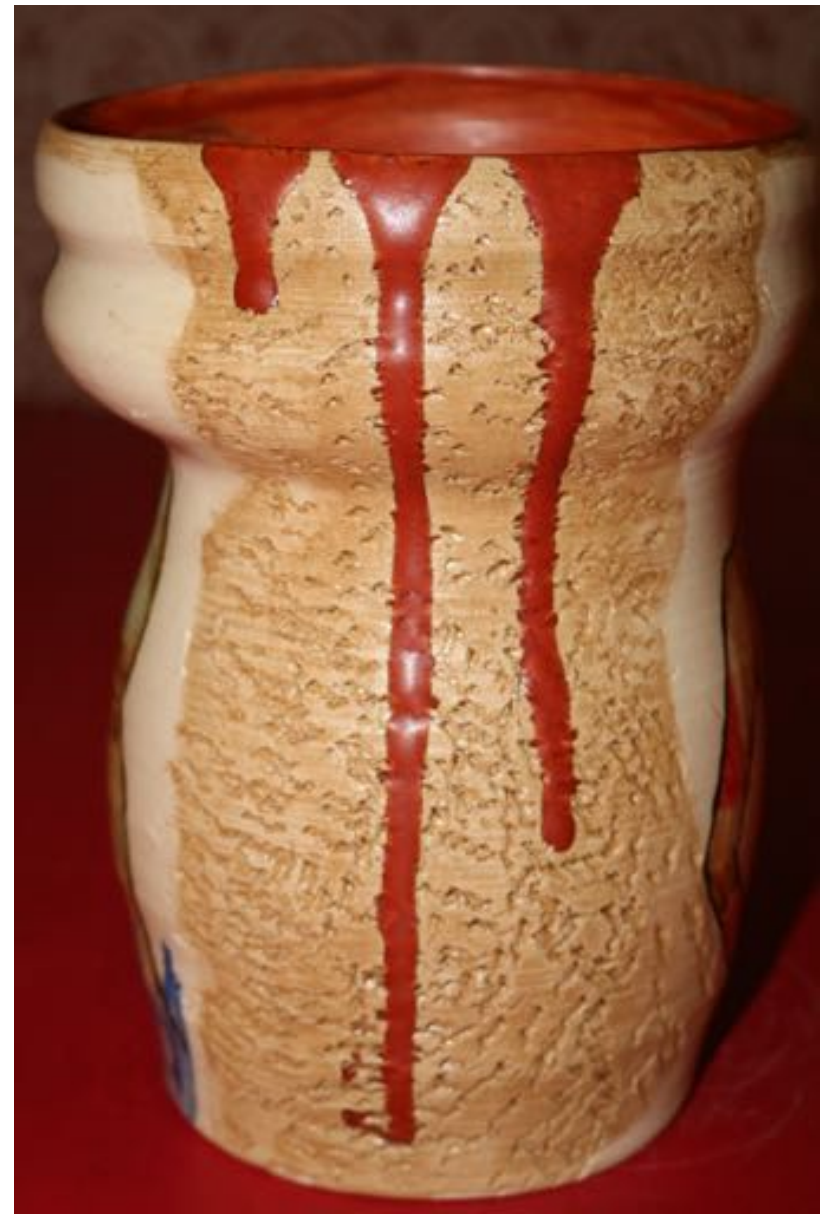
A set of three vases of different sizes with painted figures in various positions surrounded by textured, mottled brown glaze



The other side of the vases depict three other painted figures in the same manner as seen before



Texture 1 was created using trimming tools. Mottled brown glaze with paprika matte drips



Texture 2 was created using a stick with glued piece of kiln material. Mottled brown glaze with paprika matte drips



The interiors of all three vases are covered with paprika matte which is dripped on the outside



Paprika matte fully covers the interior of the largest vase



View of bent legs from under



Front view of figure



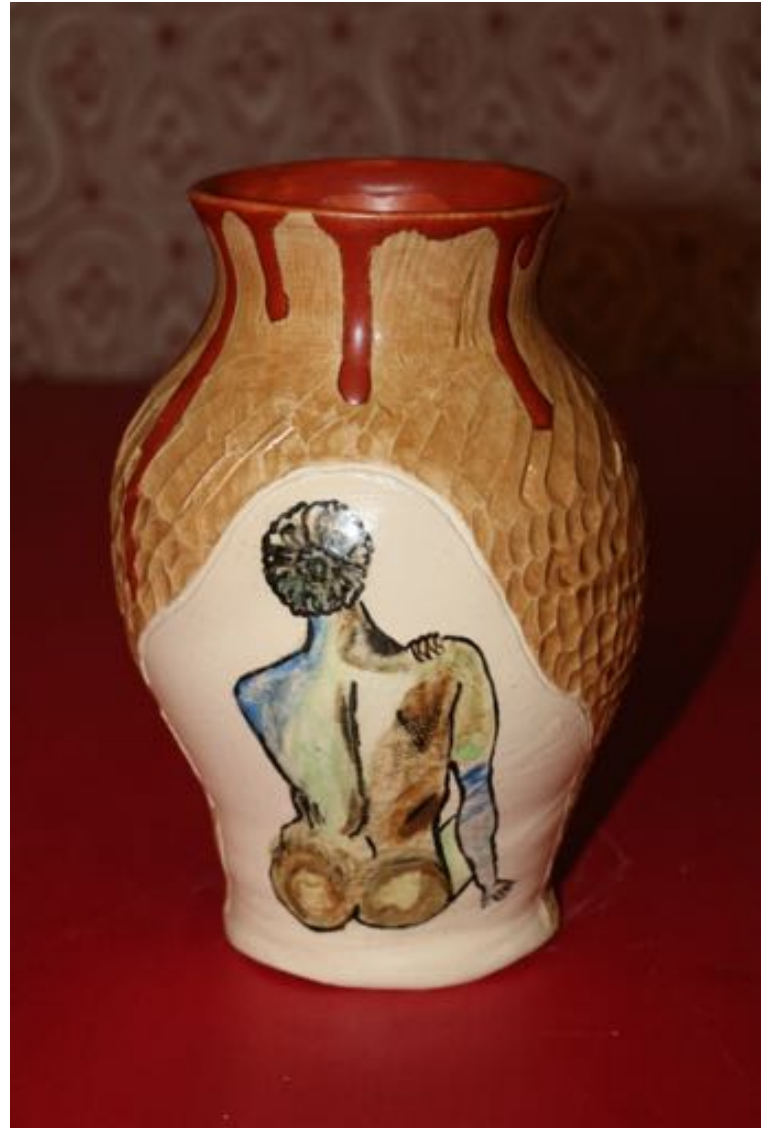
Hunched over squatted figure



Side view of sitting female figure



Legs diving into water



Back view of female figure